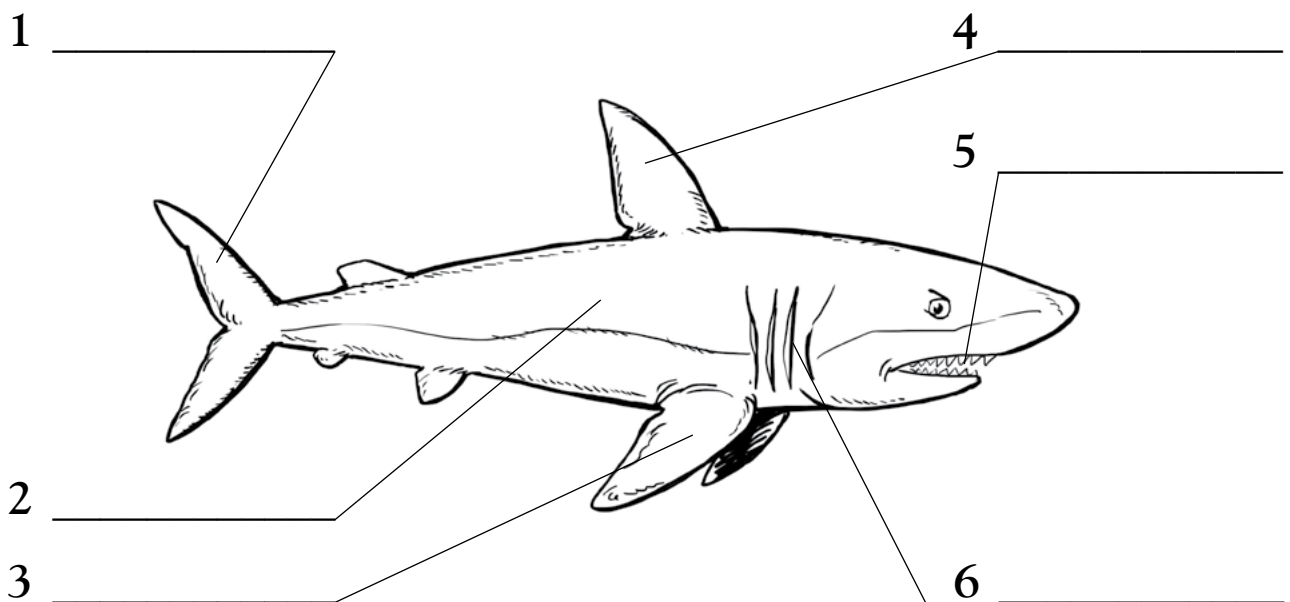


1 Match the word to the correct definition.

- | | |
|---------------|---|
| 1 prehistoric | a This contains gas and helps the fish to float. |
| 2 migration | b A tough, rubbery material that makes up a shark's skeleton. |
| 3 breed | c A long journey made by many animals to find places to feed. |
| 4 cartilage | d A long time ago, before history was written down. |
| 5 pouch | e To have babies. |

2 Use the words in the box to label the picture.

dorsal fin pectoral fin jaws gills skin tail



3 Find out what conservation groups are doing to save sharks. Are they doing something to stop people killing sharks for their meat and polluting their habitat? Write a letter to a conservation group telling them what you think of their work.

4 Complete the sentences with the words in the box.

gas tiny teeth sea creatures flexible smelling

- Some sharks are hunters that speed through the water in search of their prey, but others feed on tiny _____.
- Sharks have a streamlined shape and _____ body.
- Swim bladders help fish to float. These contain _____.
- Sharks use their senses of seeing, hearing and _____ to find food.
- Filter feeders are sharks with huge mouths and _____.

5 Complete the table with the words or numbers in the box.

Wobbegong shark 2 sea bed Great white shark 20

	1 _____	Sawshark	Whale shark	2 _____
Shape	flat body	flat body	3 up to _____ tonnes	4 up to _____ tonnes
Colour	green, yellow, brown	brown	grey-blue, white spots with stripes	dark grey with pale grey under
Habitat	sea bed	5 _____	open ocean	near the shore

6 Read the sentences. Write T (true) of F (false).

- All sharks attack people. _____
- Sharks are in danger of dying out. _____
- Scientists put tags on sharks to kill them. _____
- Some people kill sharks for their meat. _____
- Chemicals do not pollute shark habitats. _____

7 Complete the sentences with *as ... as* or the comparative form of the words in brackets.

- 1 Greenland sharks live _____ (far) north than any other shark.
- 2 Dwarf lantern sharks are about _____ (long) a pencil.
- 3 Megalodons grew _____ (long) than mako sharks.
- 4 A shark's body is thick. It gets _____ (thin) at the head.
- 5 A shark's skin is _____ (rough) sandpaper.

8 Use the correct form of the adjectives to complete the sentences.

famous large fast dangerous thick

- 1 Some people think that sharks are the _____ creatures in the world.
- 2 One of the _____ sharks in the sea is the mako.
- 3 The whale shark has the _____ skin of any animal.
- 4 The great white shark is probably the _____ shark of all.
- 5 The great white shark is the _____ meat-eating shark in the sea.

9 Complete the sentences by combining two words in the box.

strange meat teeth S spiral shaped (×2)
like eating looking

- 1 Stethacanthus was a _____ shark.
- 2 Megalodon was a _____ shark.
- 3 Sharks have _____ scales on their skin.
- 4 Sharks move their bodies in large, _____ curves.
- 5 Port Jackson sharks have _____ eggs.