

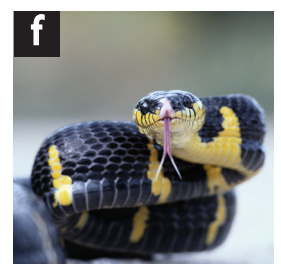
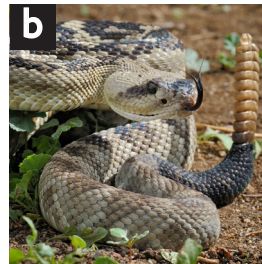
- 1** Draw and label a snake eating lunch. Use the words in the box.

scales tongue prey fang venom



- 2** Match 1–6 with a–f.

- 1 The python is the longest snake. c
- 2 A snake's tongue moves in and out. ____
- 3 Venom comes out of its fangs. ____
- 4 The snake takes the eggs from other animals. ____
- 5 A snake's colour can help it hide. ____
- 6 Some snakes have a rattle in their tail. ____



3 Draw a line under the correct word to complete the sentences.

- 1 A snake does not have arms or legs / skin.
- 2 This snake pushes against a tail / a tree.
- 3 The snake's skin feels cool and dry / wet.
- 4 Most snakes live in cold / warm countries.
- 5 A snake's tongue is like a nose / an arm.
- 6 Snakes eat animals / people.



4 Read the sentences. Write T (true) or F (false).

- 1 Some snakes push across the sand. T
- 2 A snake's skin has strong hair. _____
- 3 Snakes are all sizes. _____
- 4 The thread snake is the longest snake. _____
- 5 A snake's tongue smells the air for food. _____
- 6 Snakes eat their prey whole. _____

5 Complete the sentences with the words in the box.

lay shake ~~kill~~ crush spit hisses

- 1 Some snakes kill their prey.
- 2 Some snakes wrap around their prey and _____ it!
- 3 A snake _____ to frighten other animals.
- 4 Some snakes _____ the rattle in their tail and make a loud noise.
- 5 Some snakes _____ venom.
- 6 Many snakes _____ eggs. The eggs hatch and small snakes come out.

6 Match the opposites.

- | | |
|---------|--------|
| 1 up | a big |
| 2 cool | b out |
| 3 in | c new |
| 4 alive | d warm |
| 5 small | e down |
| 6 old | f dead |
- 