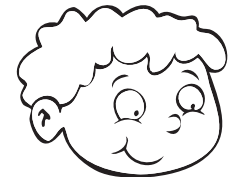
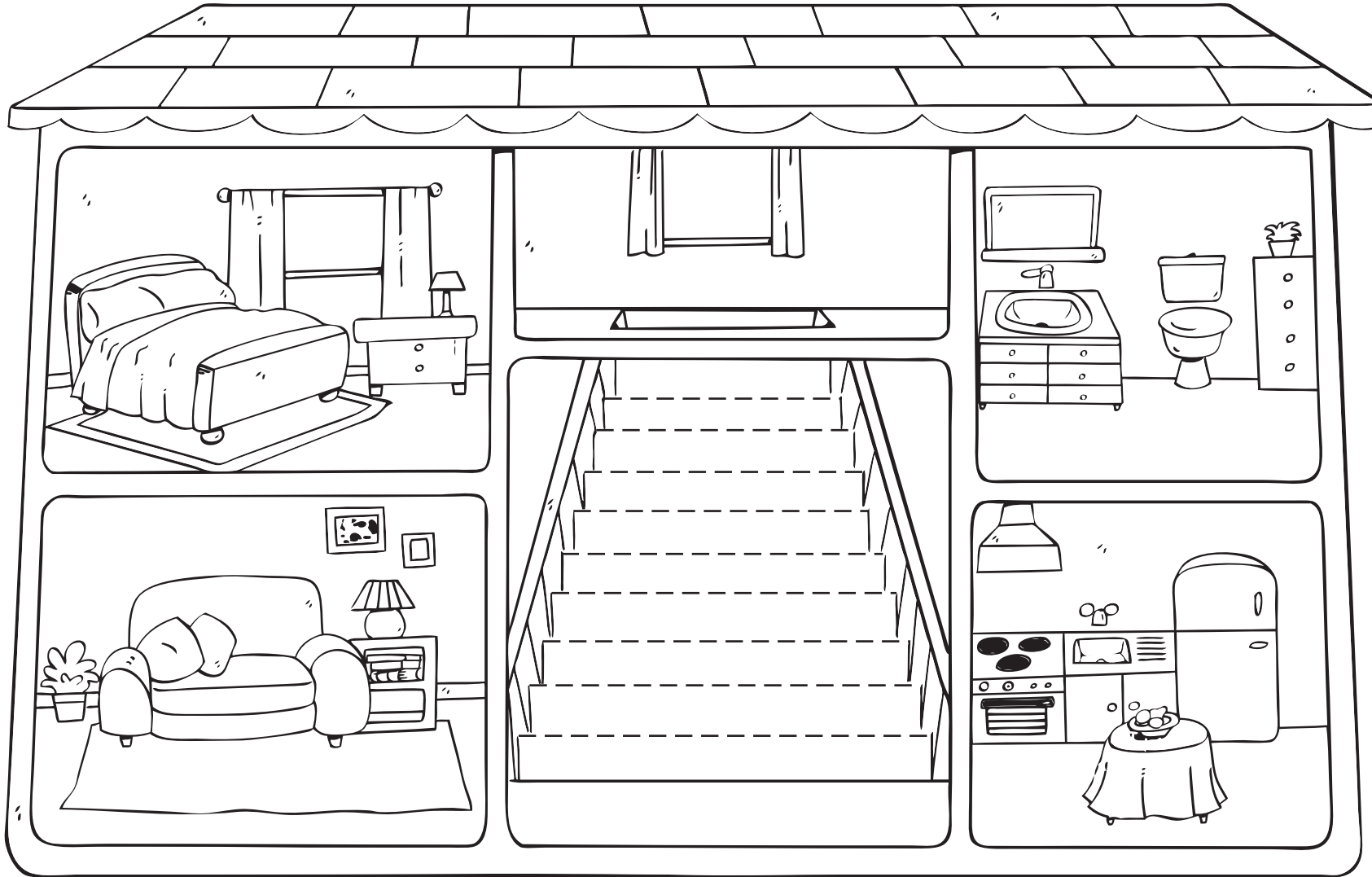


4 Patch's house



Patch the Puppy 2



Unit 4 Patch's house

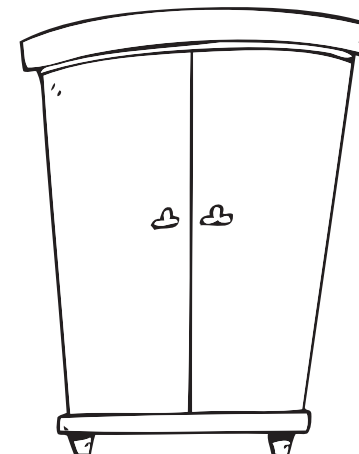
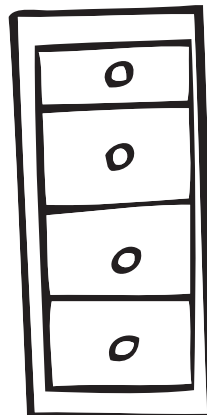
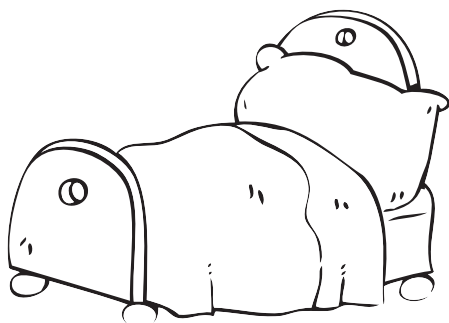
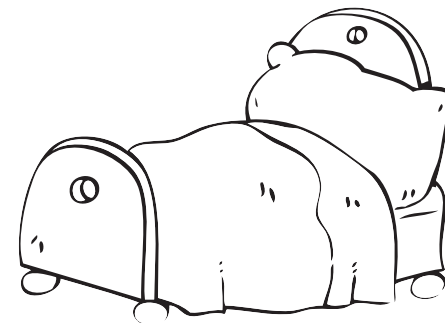
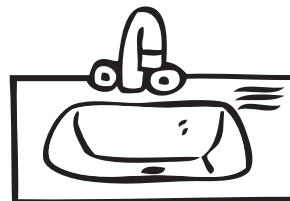
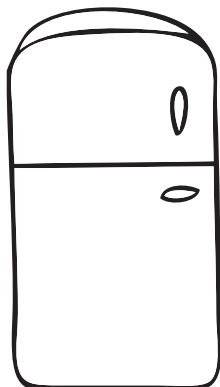
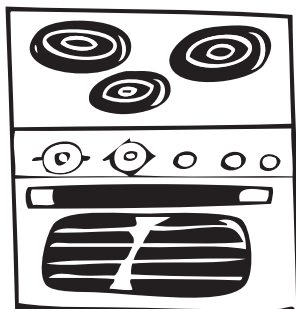
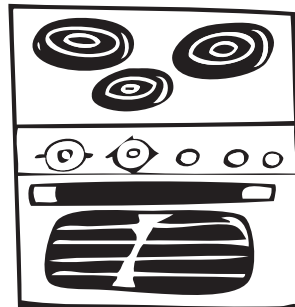
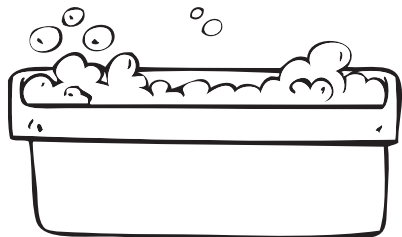
Extra worksheet 1

- Colour the house and Mummy, Daddy, brother, sister and baby.
- Cut out the members of the family along the block lines.
- Listen to your teacher and put the family in the correct room, e.g. **Put Daddy in the bathroom.**

4 Patch's house



Patch the Puppy 2

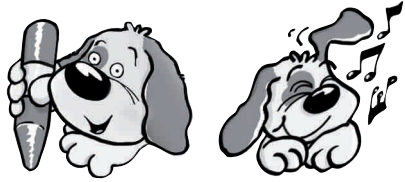


Unit 4 Patch's house

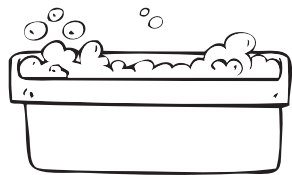
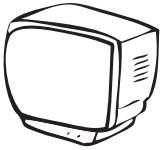
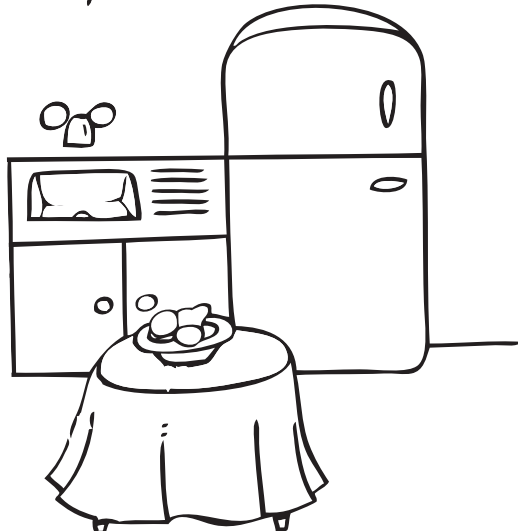
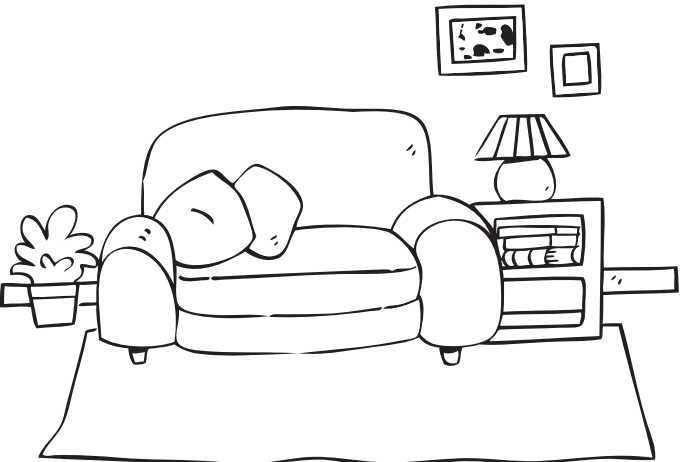
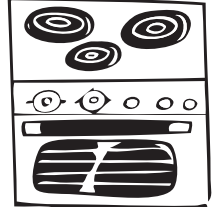
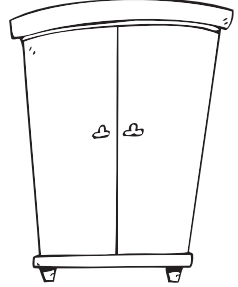
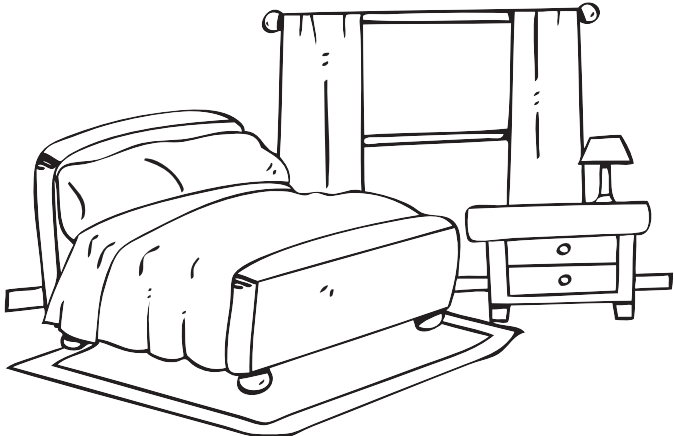
Extra worksheet 2

- Circle the furniture that does not belong.
- Point to each row and say the room to which the furniture belongs.

4 Patch's house




Patch the Puppy 2



Unit 4 Patch's house

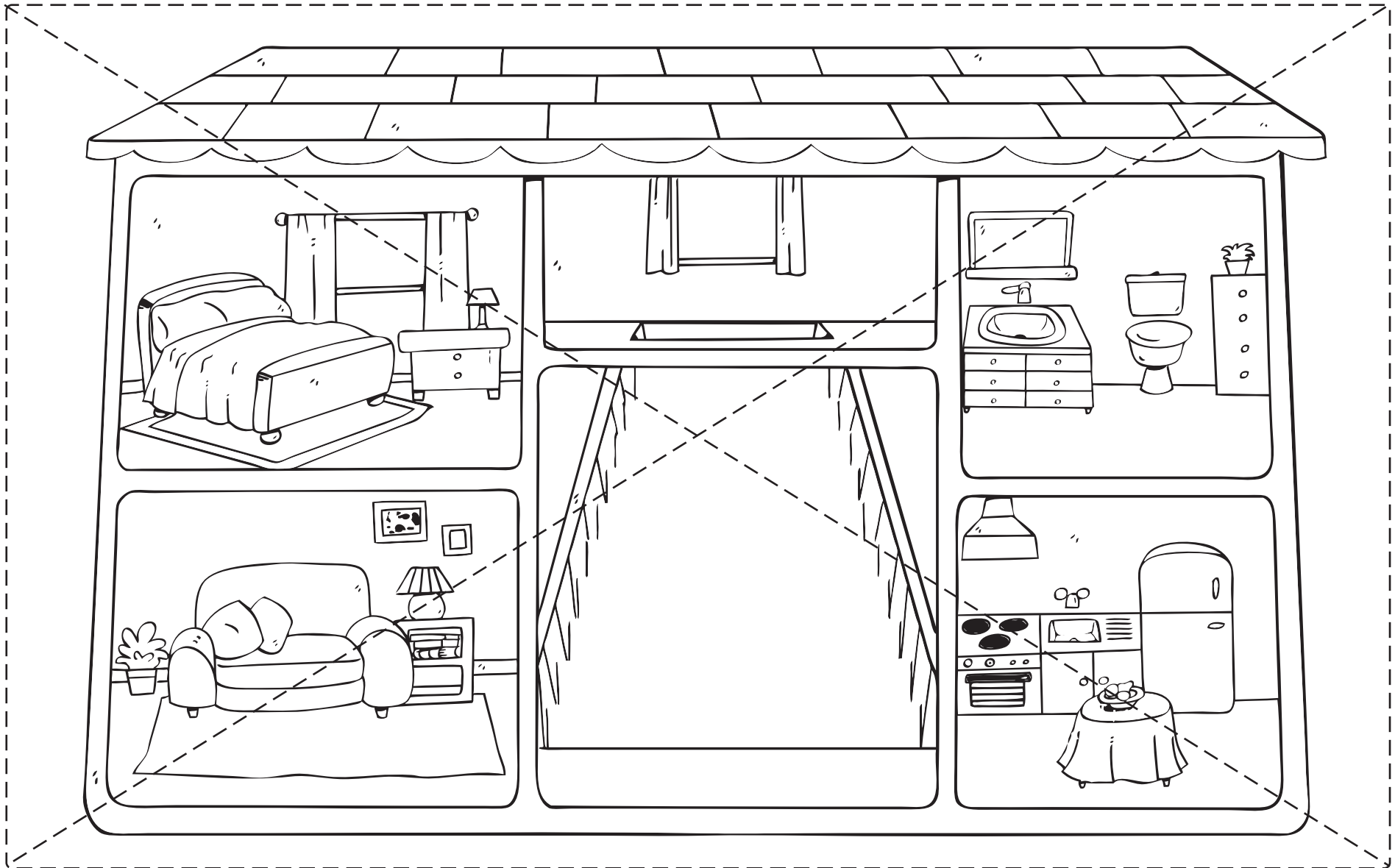
Extra worksheet 3

- Colour the furniture.
- Cut out the furniture along the dotted lines.
- Put the furniture in the correct room.
- Sing the **Rooms song** CD2  track 5 and point to the rooms.

4 Patch's house




Patch the Puppy 2



Unit 4 Patch's house

Extra worksheet 4

- Colour the rooms in the house.
- Cut along the dotted lines to make a jigsaw.
- Put the pieces together to make the rooms of the house.
- Sing the **Up the stairs song** CD2  track 1 and point to the rooms.