

# Patch

1 & 2

the puppy



## Flashcards

Joy Morris and Joanne Ramsden

 **MACMILLAN  
HEINEMANN**  
English Language Teaching

# Contents

Card 1	Patch's ears	Card 33	apples
Card 2	Patch's nose	Card 34	sausages
Card 3	Patch's tummy	Card 35	bananas
Card 4	Patch's toes	Card 36	cakes
Card 5	elephant	Card 37	brown
Card 6	yellow	Card 38	bell
Card 7	cold	Card 39	Easter rabbit
Card 8	hot	Card 40	Easter egg
Card 9	Patch's coat	Card 41	policeman
Card 10	Patch's hat	Card 42	Ana with dog's lead
Card 11	Patch's boots	Card 43	eyes
Card 12	scarf	Card 44	ears
Card 13	blue	Card 45	nose
Card 14	doll	Card 46	mouth
Card 15	teddy	Card 47	hair
Card 16	yellow ball	Card 48	windy
Card 17	car	Card 49	sunny
Card 18	red	Card 50	rain
Card 19	Mummy	Card 51	cloudy
Card 20	Daddy	Card 52	Ana's hat
Card 21	Brother/David	Card 53	dress
Card 22	Sister/Ana	Card 54	jumper
Card 23	Patch	Card 55	Ana's coat
Card 24	green	Card 56	Ana's boots
Card 25	farm	Card 57	scooter
Card 26	horse	Card 58	pink ball
Card 27	pig	Card 59	kite
Card 28	duck	Card 60	boat
Card 29	cat	Card 61	bedroom
Card 30	clean Patch	Card 62	bathroom
Card 31	dirty Patch	Card 63	living room
Card 32	pink	Card 64	kitchen

Card 65 stairs  
Card 66 orange  
Card 67 purple  
Card 68 tiger  
Card 69 snake  
Card 70 monkey  
Card 71 crocodile  
Card 72 jungle  
Card 73 tomato

Card 74 egg  
Card 75 ham  
Card 76 sausage  
Card 77 cheese  
Card 78 pizza  
Card 79 witch  
Card 80 pumpkin  
Card 81 Father Christmas



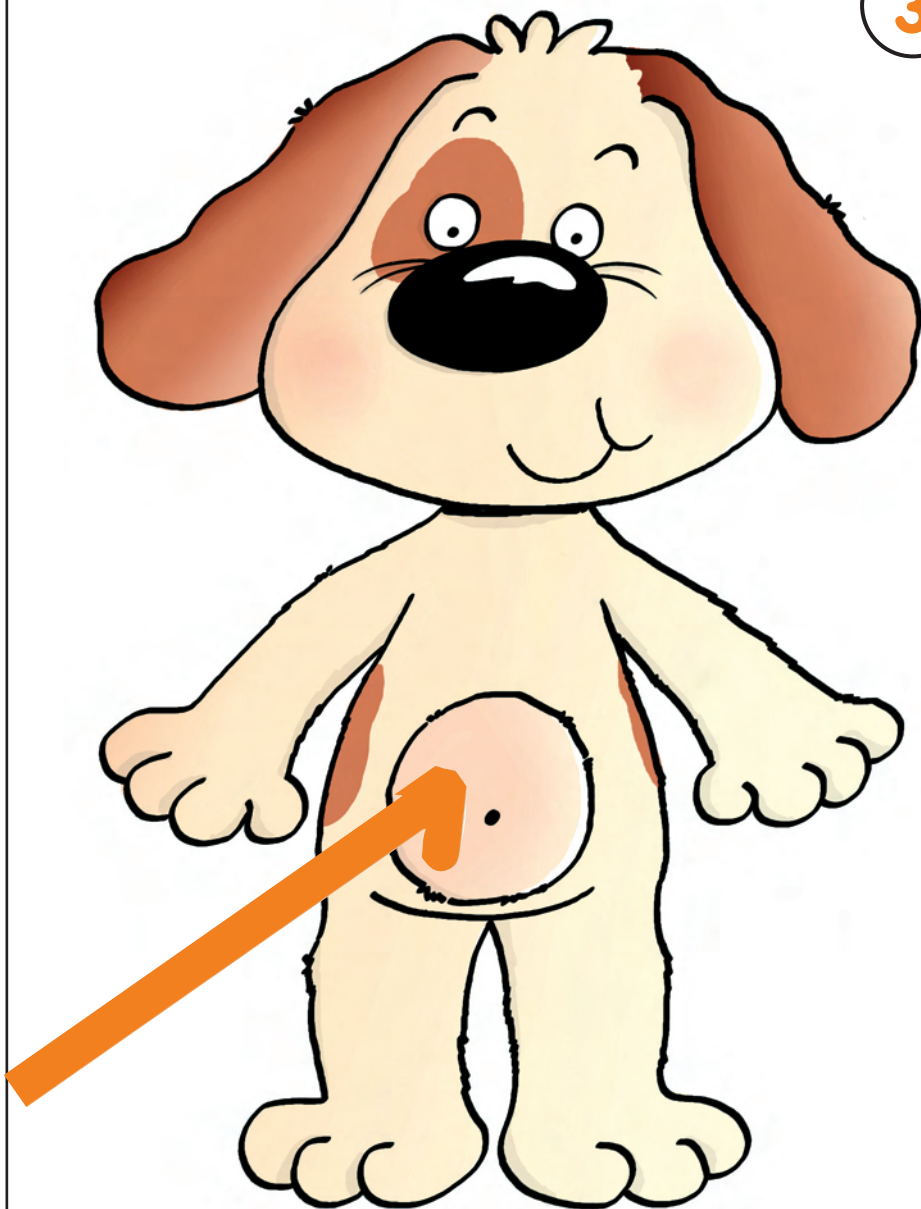




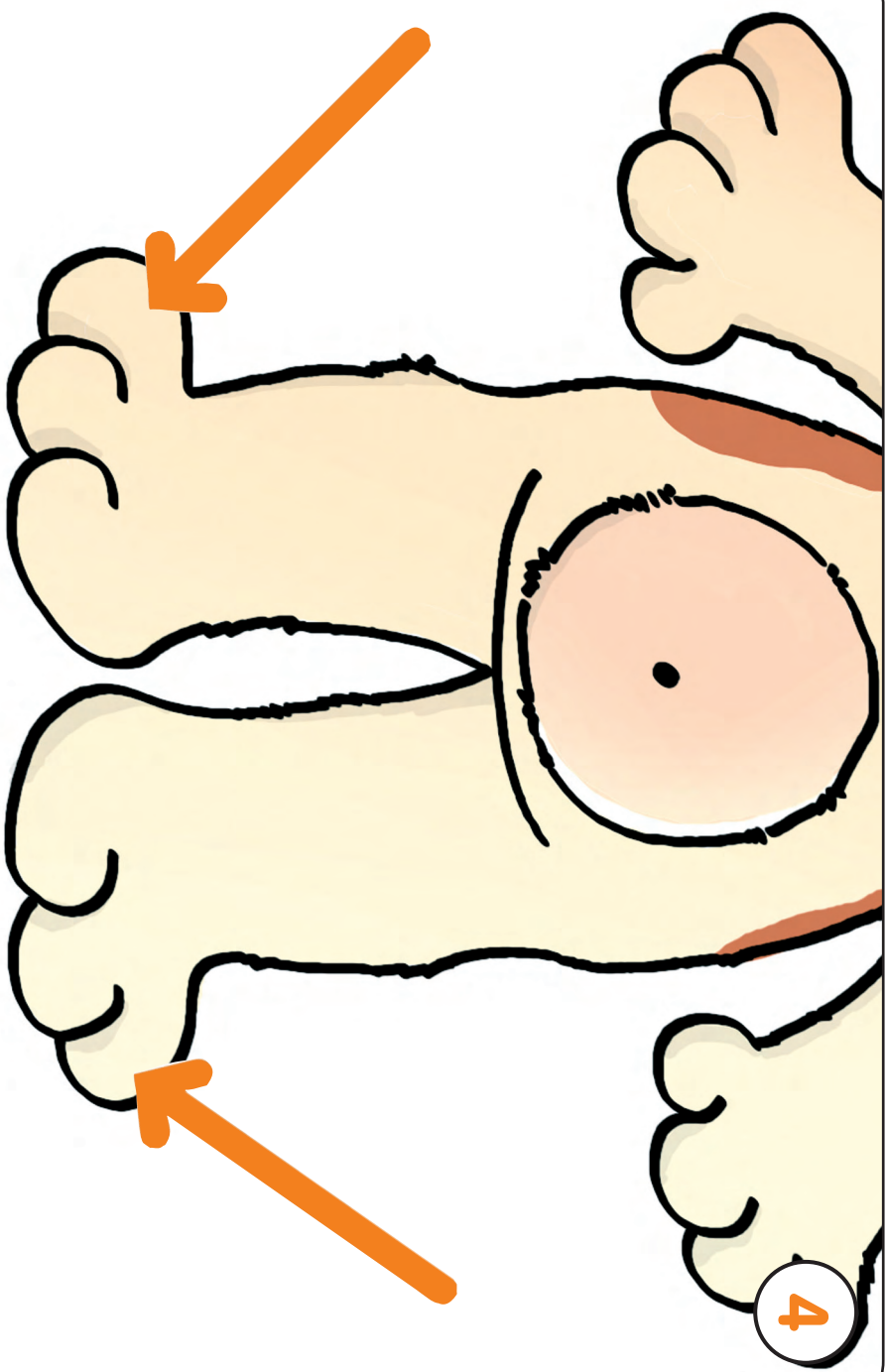








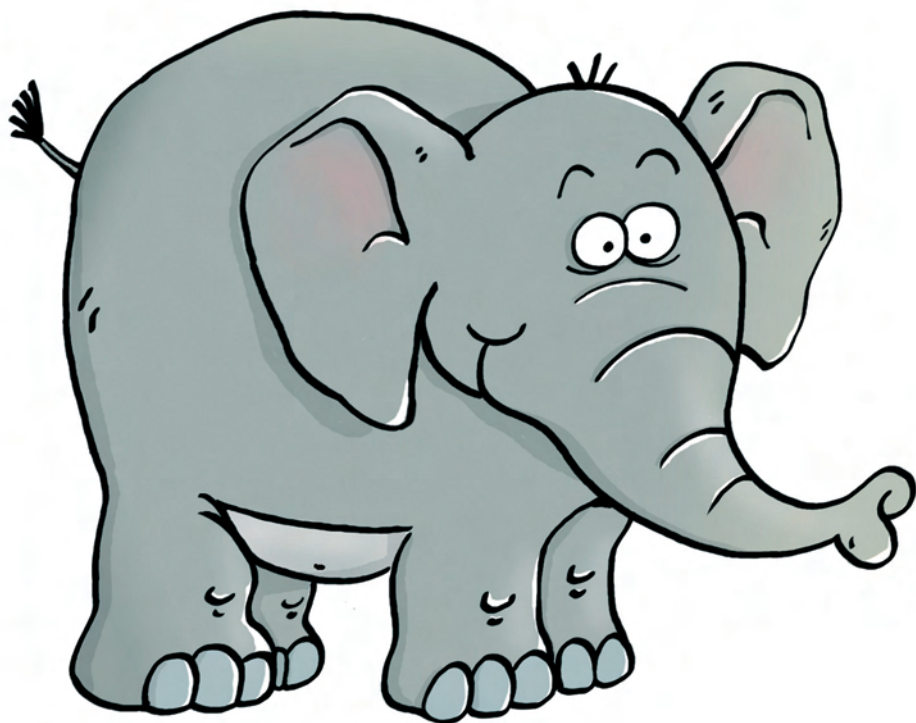














6









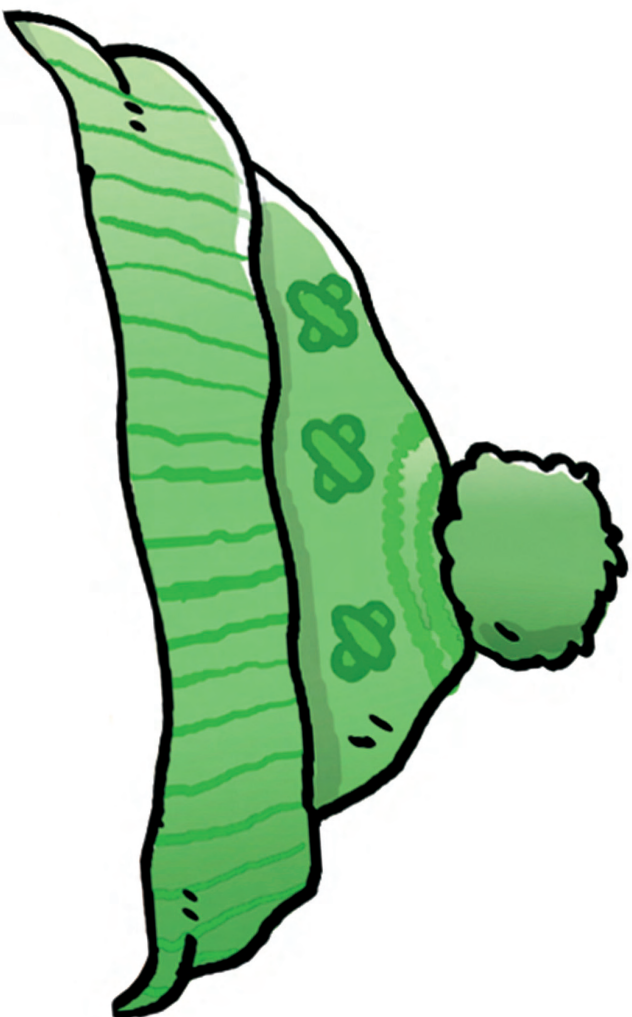




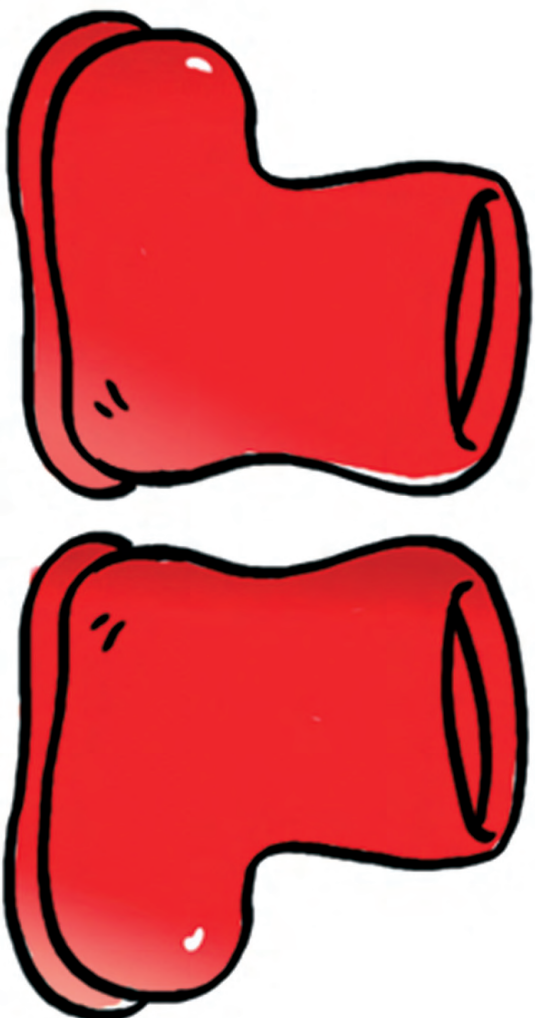




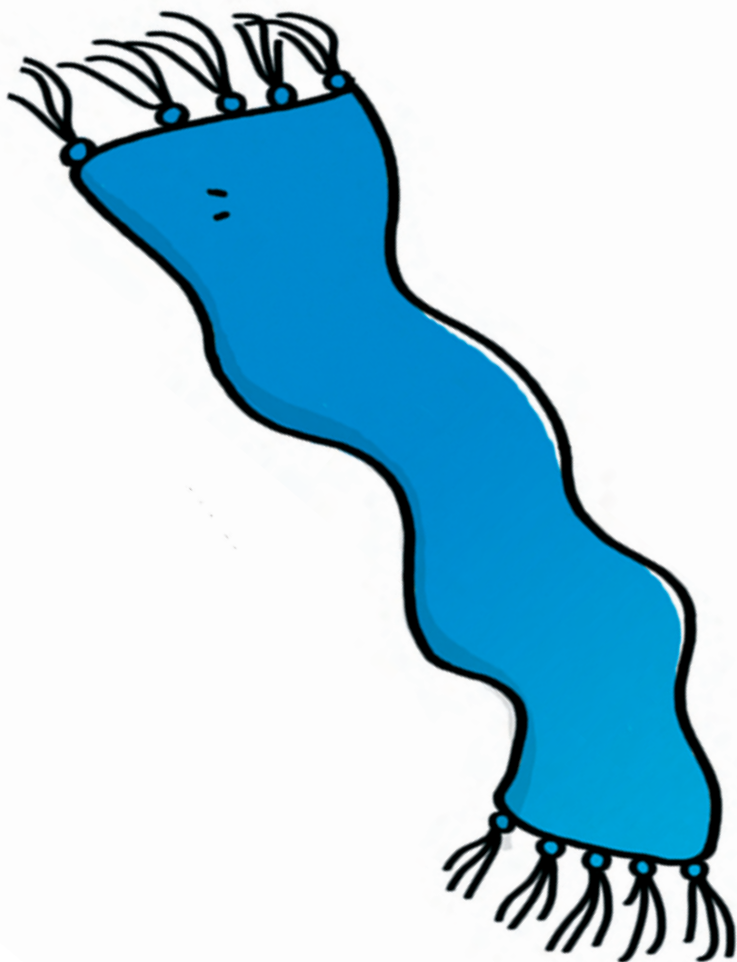


















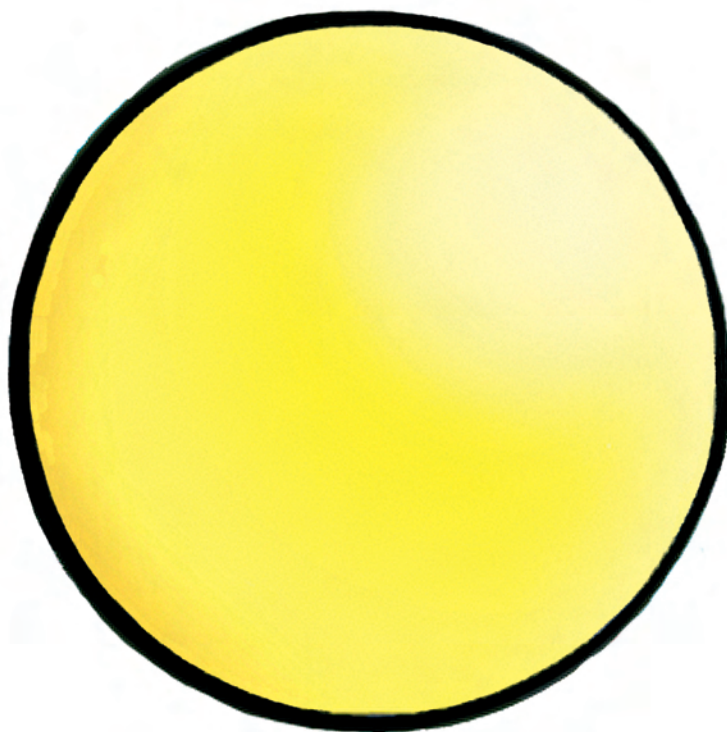


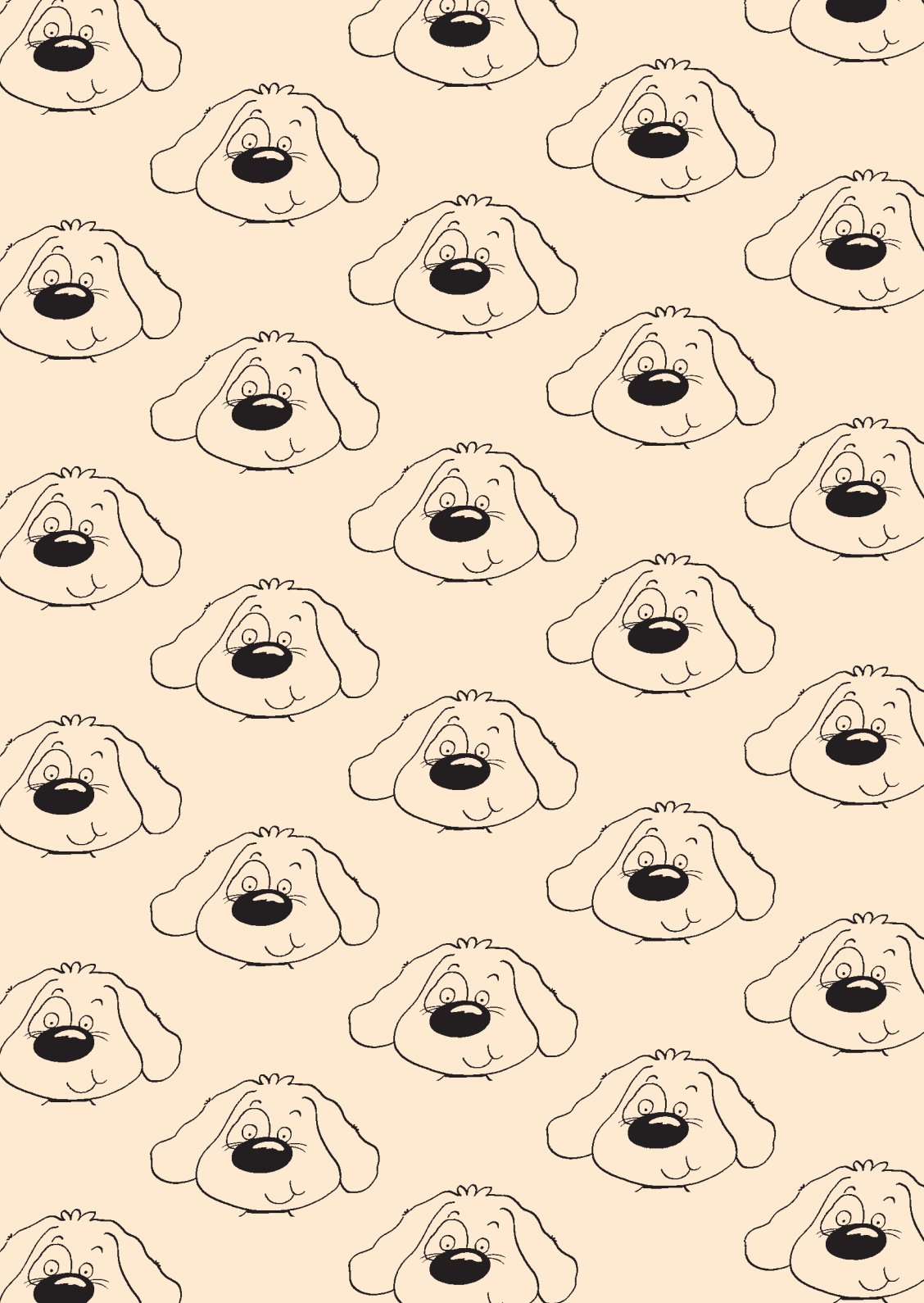




































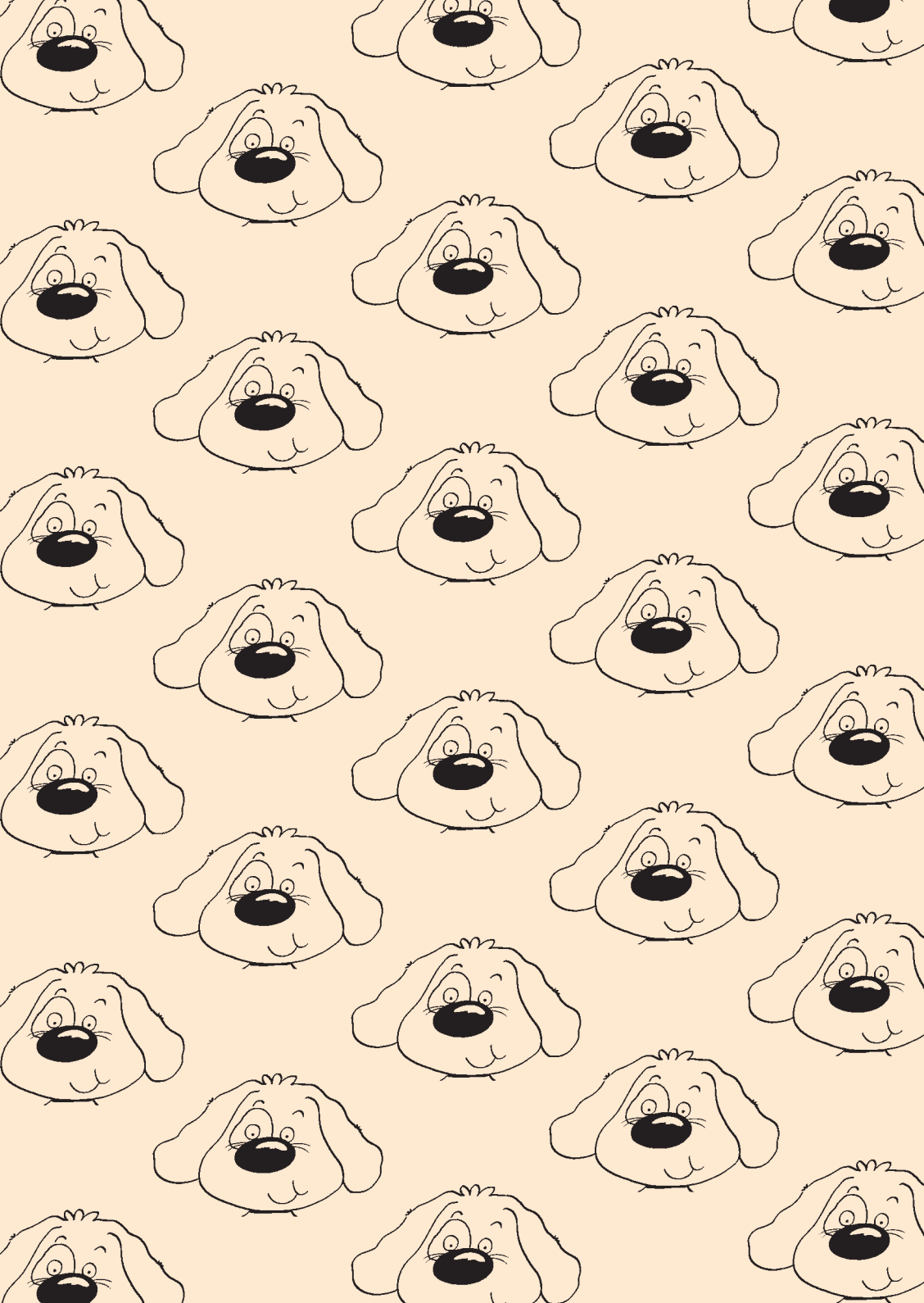




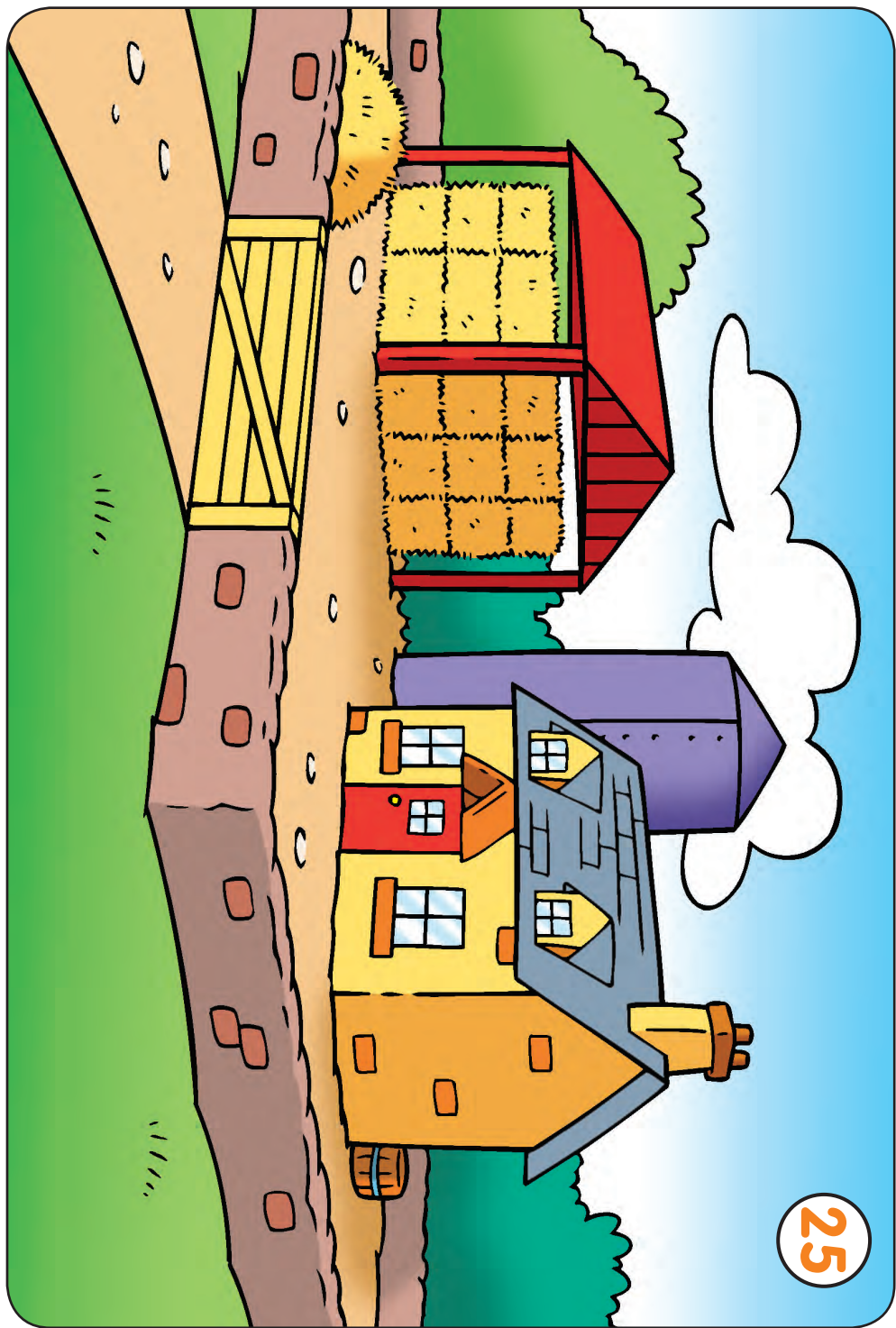






















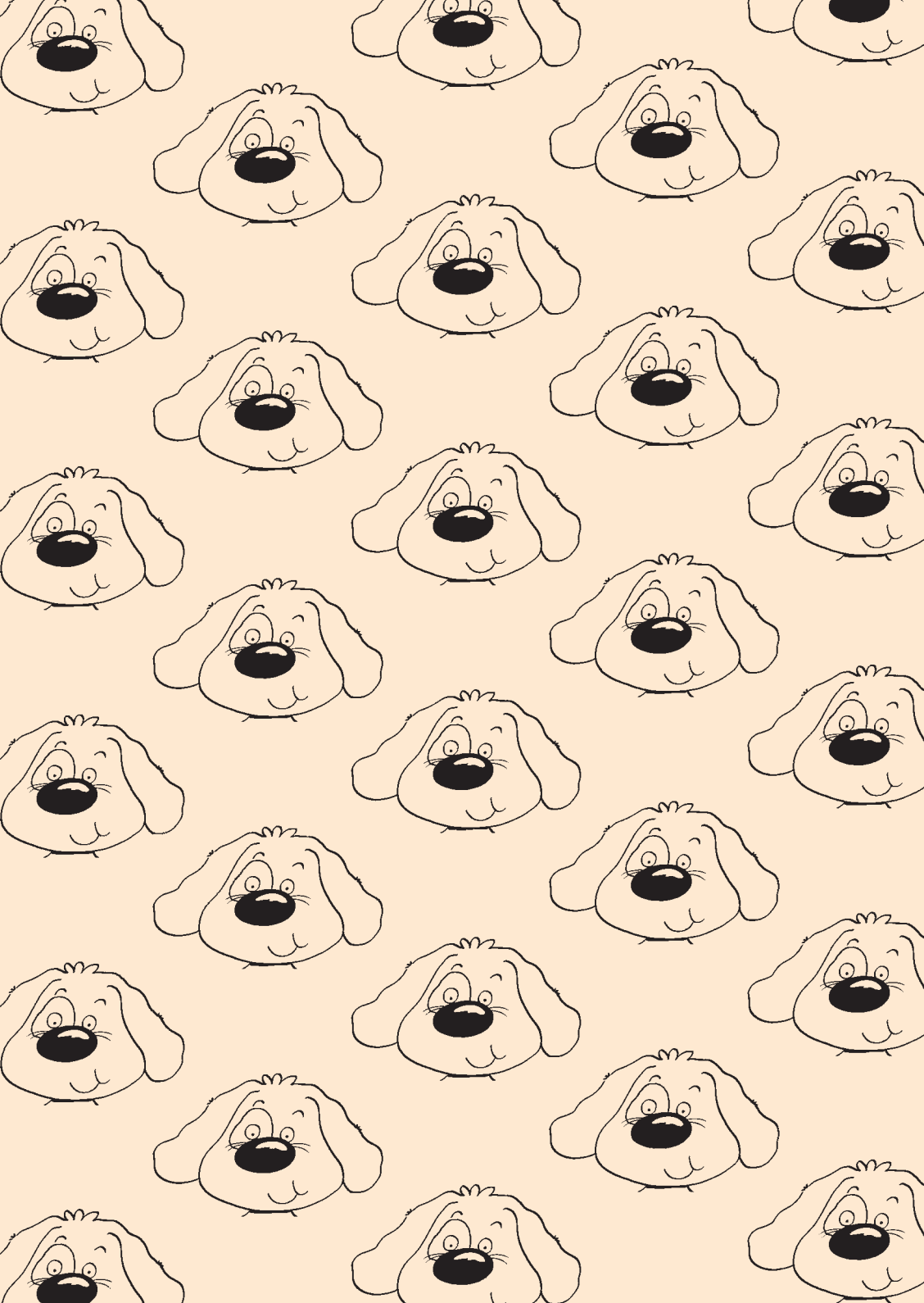


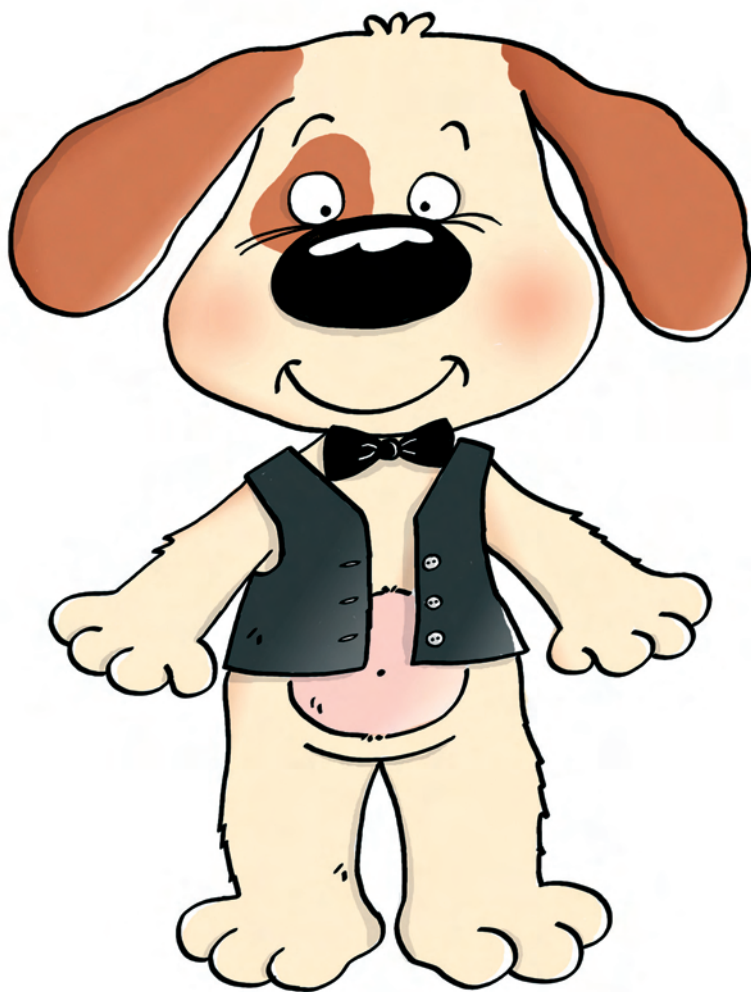




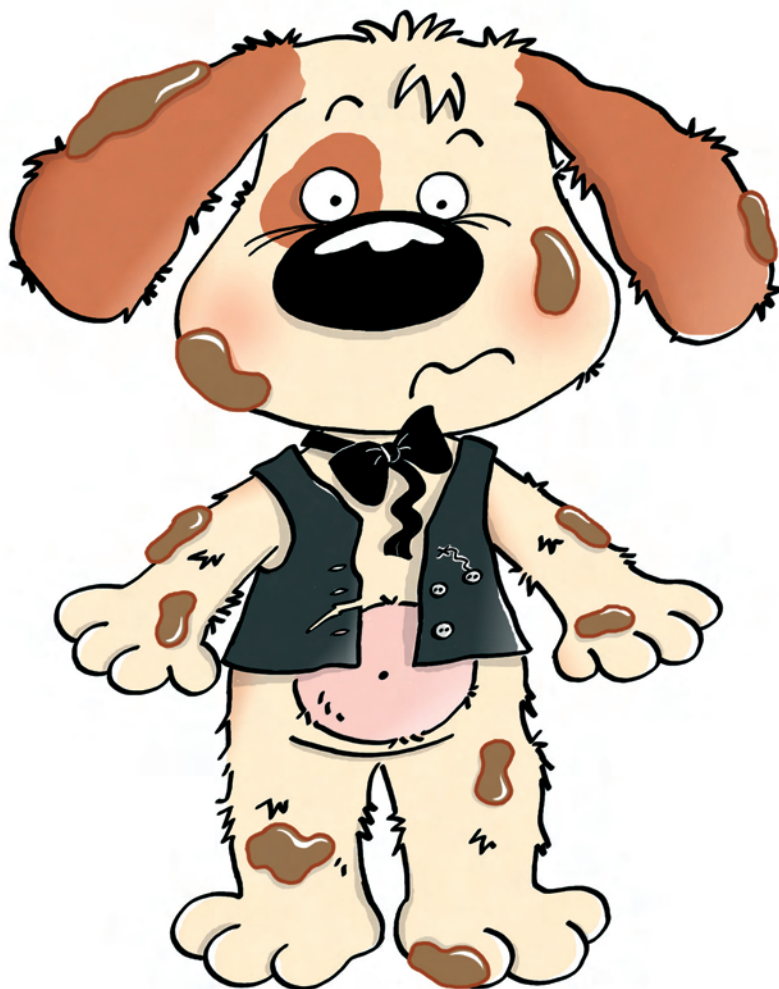






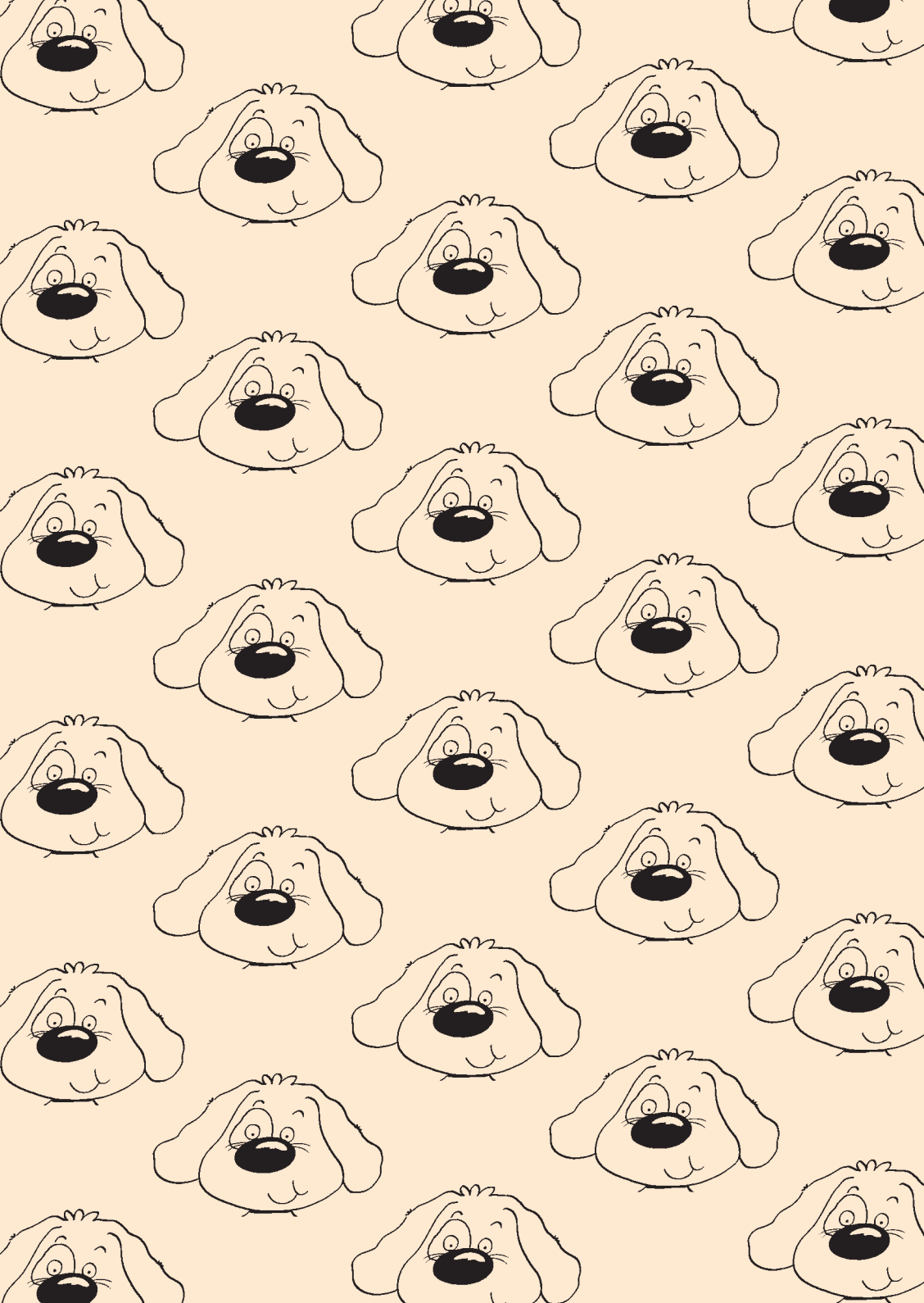




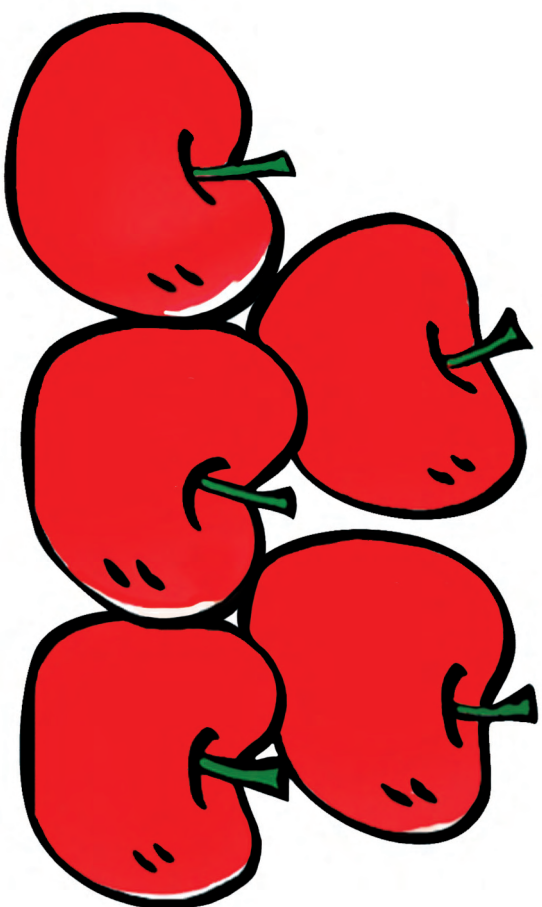




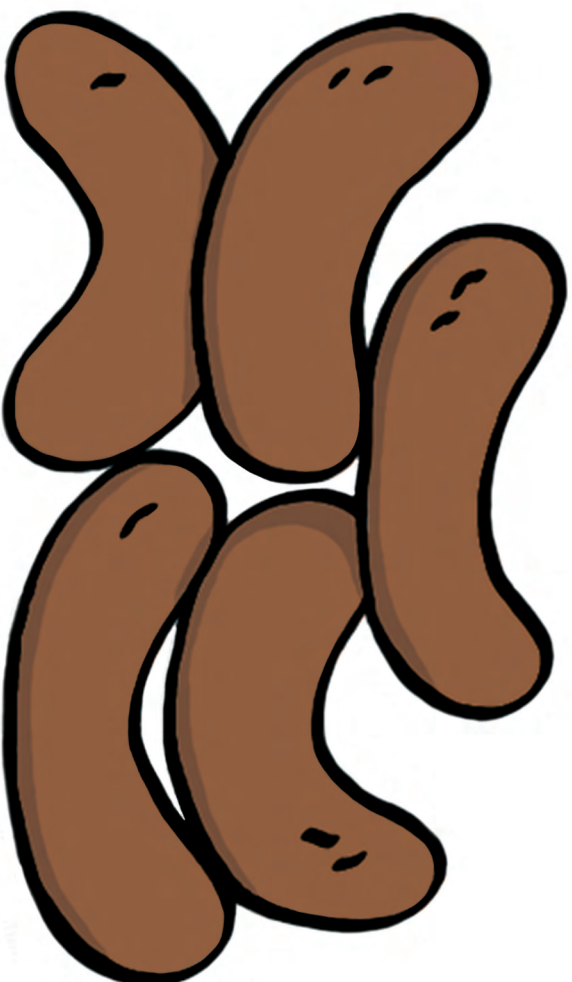








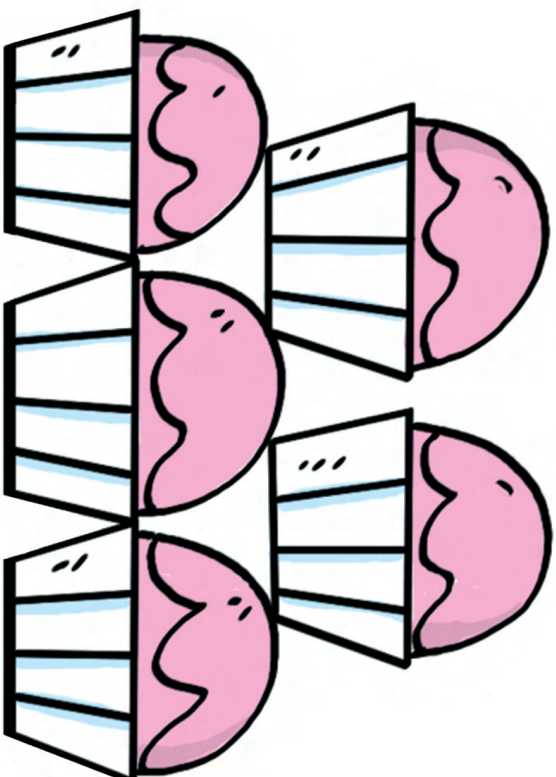














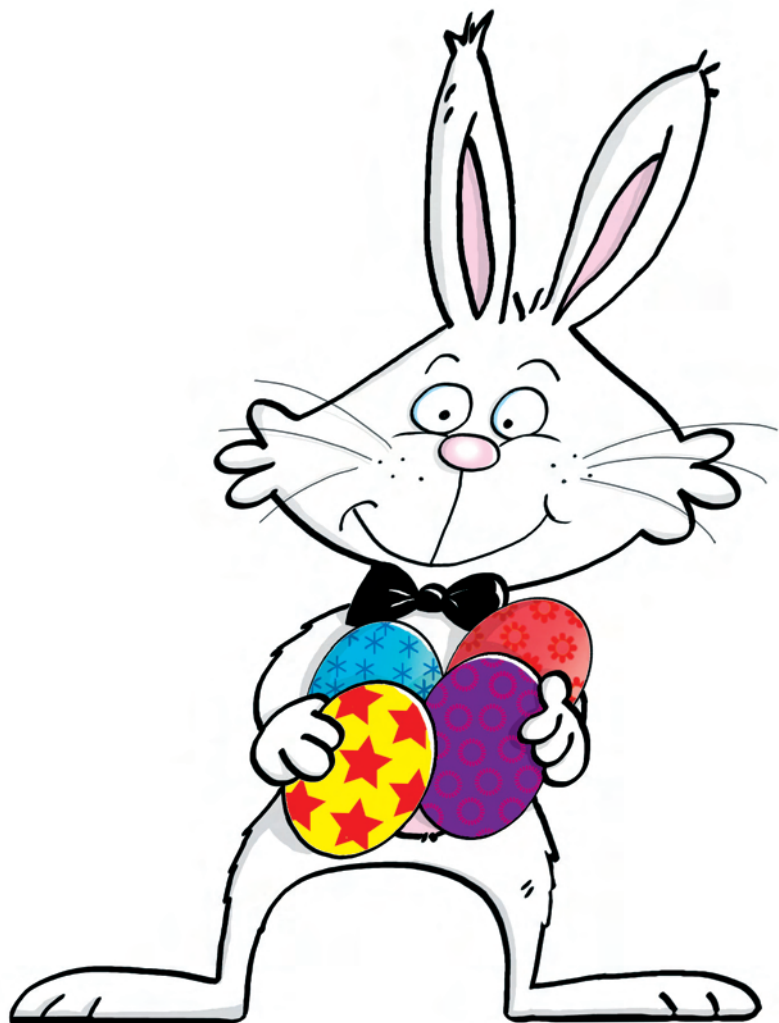


















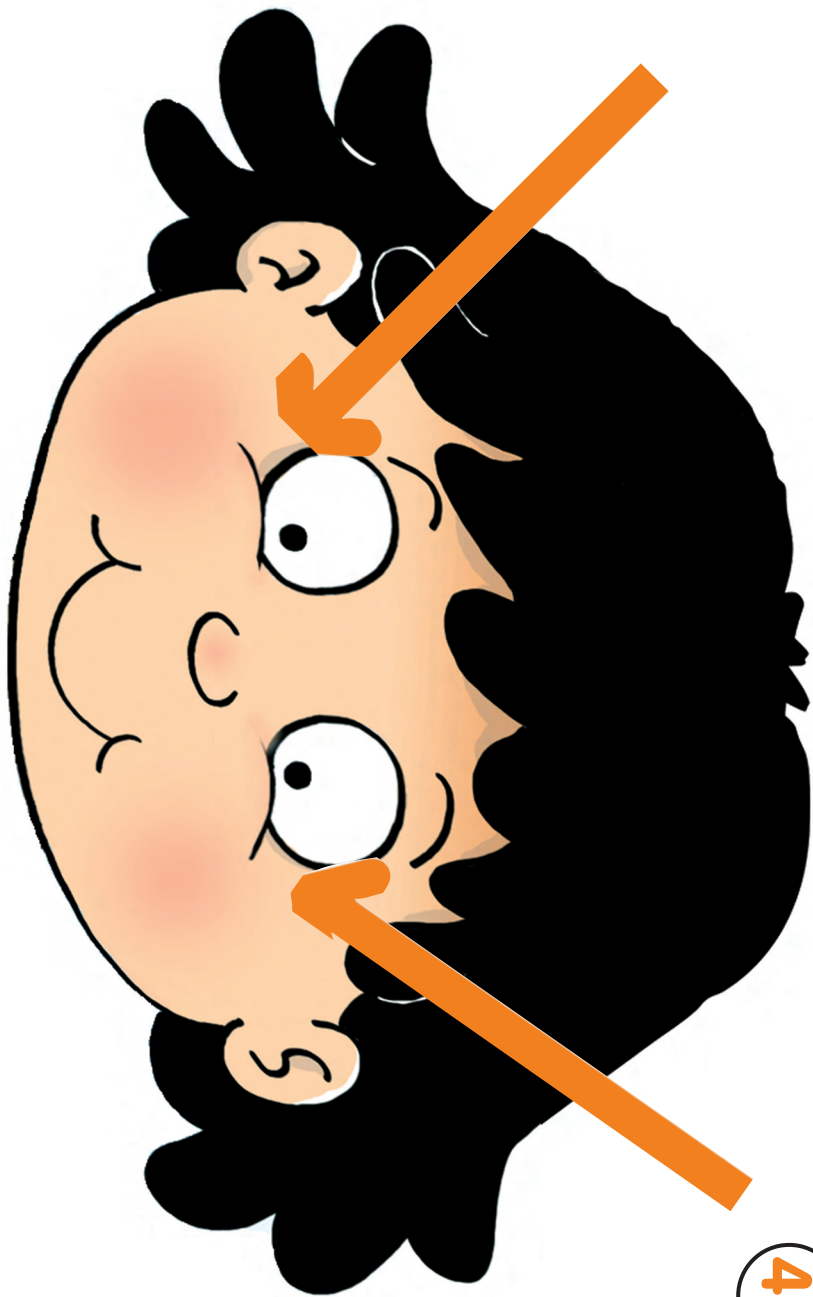




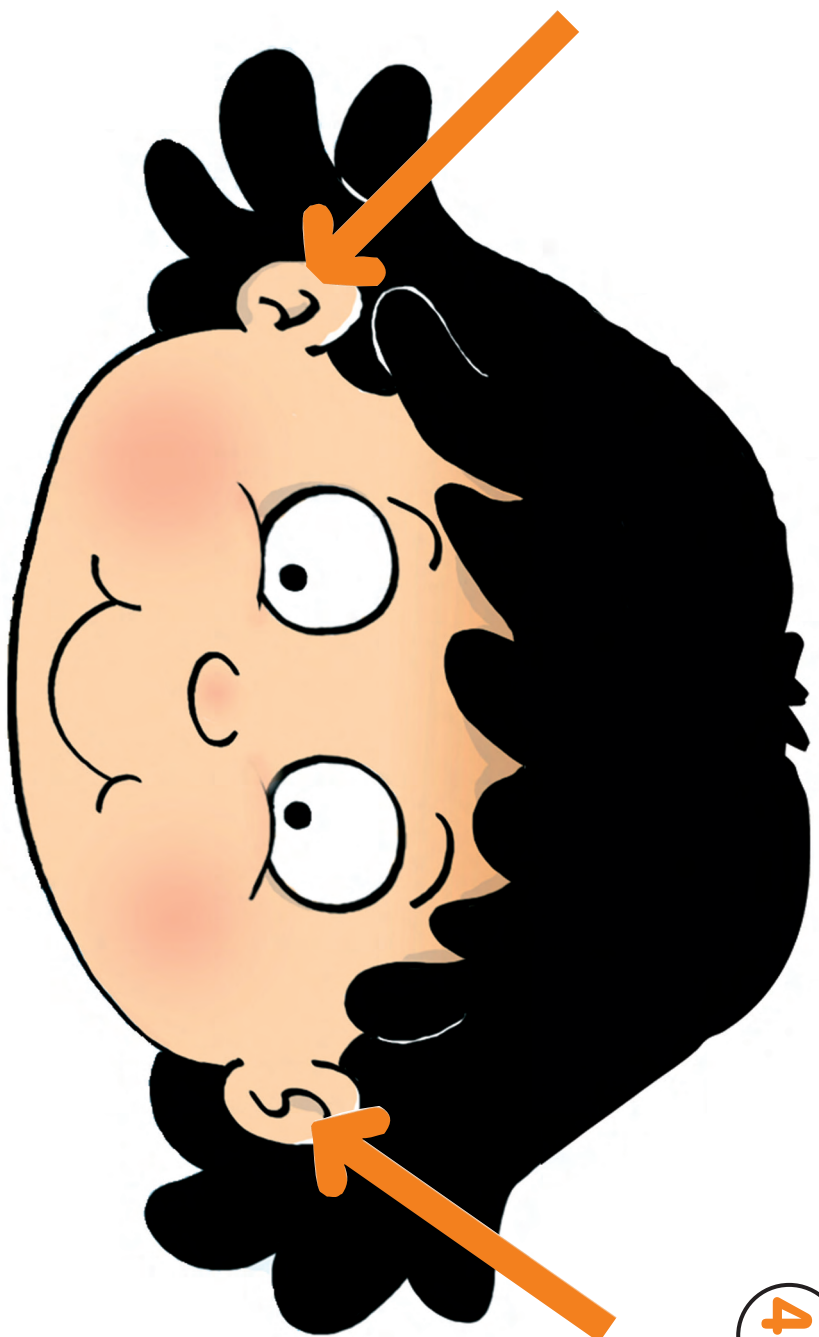






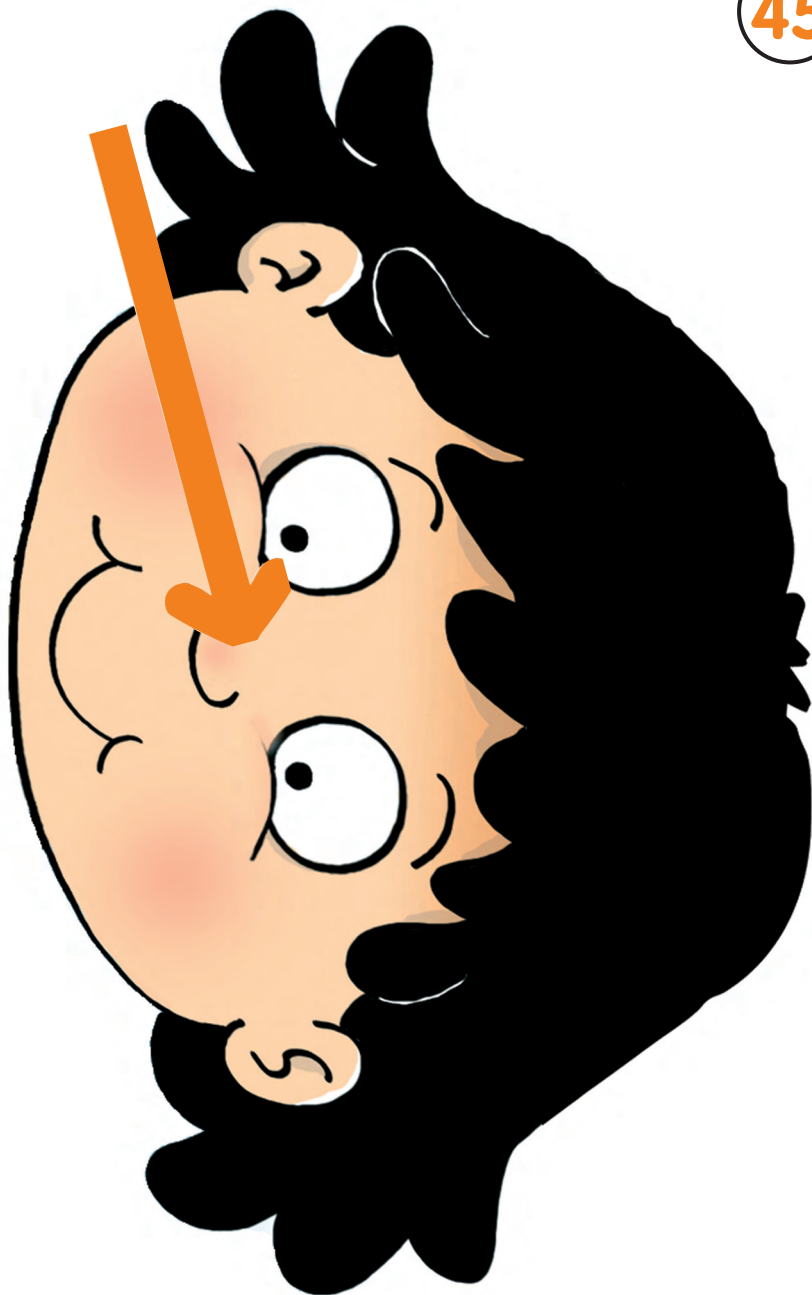








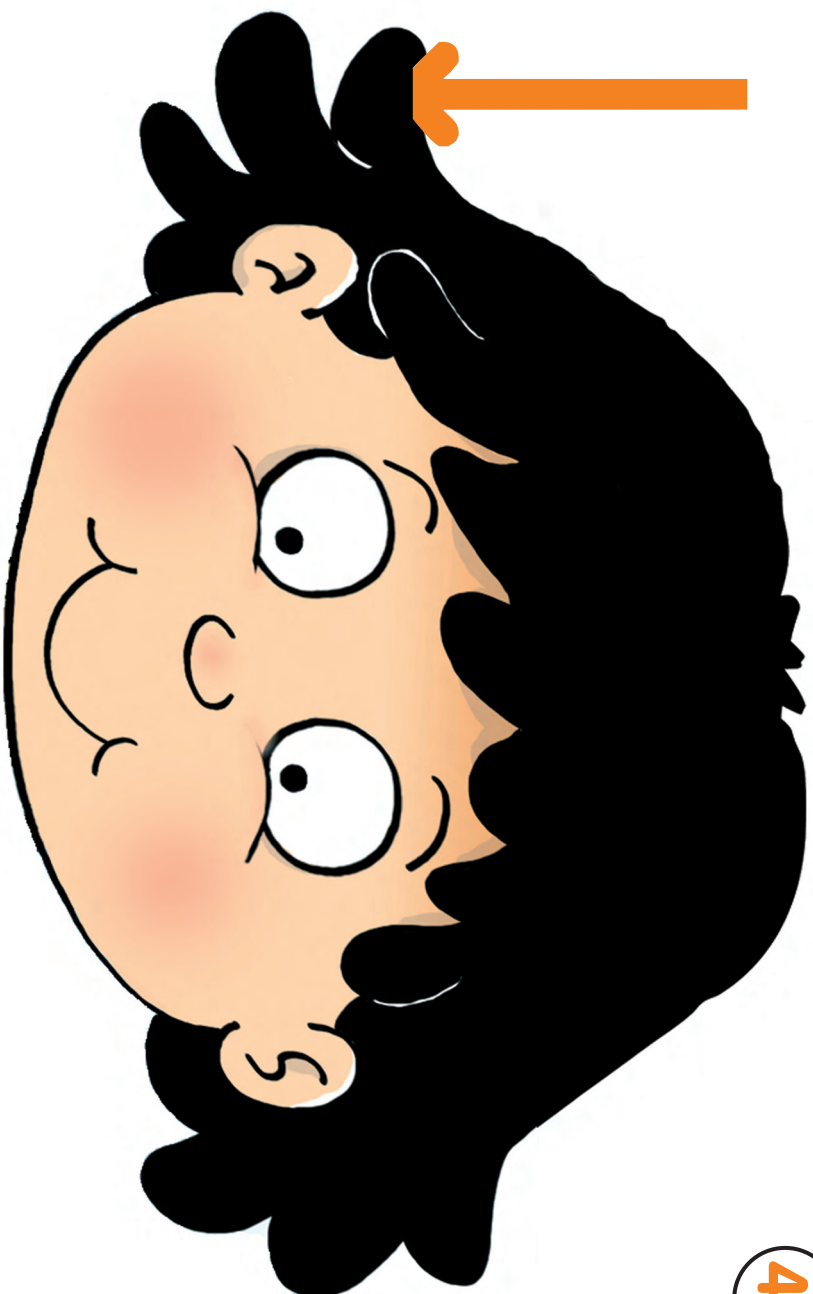










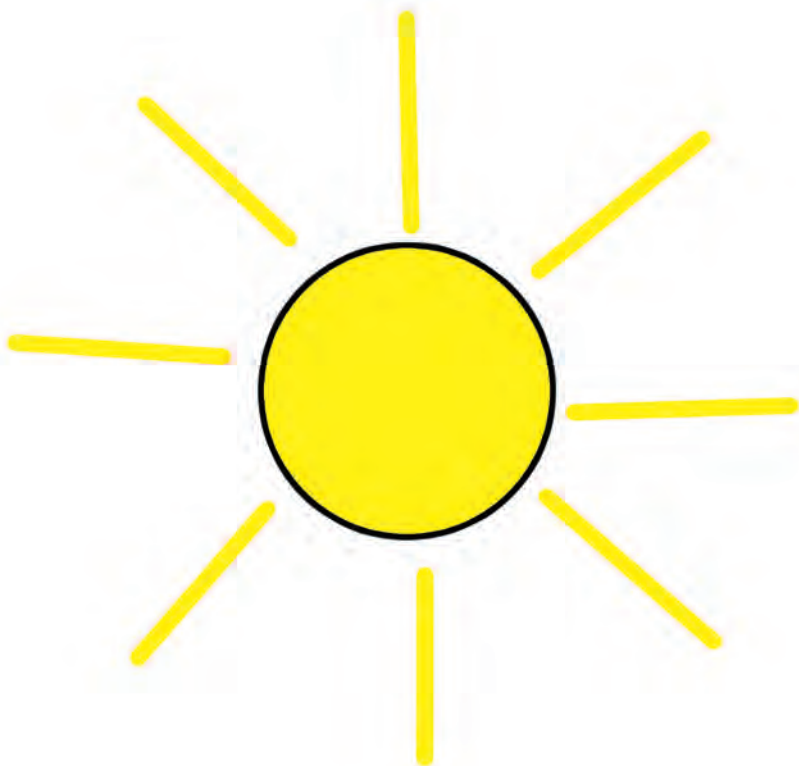




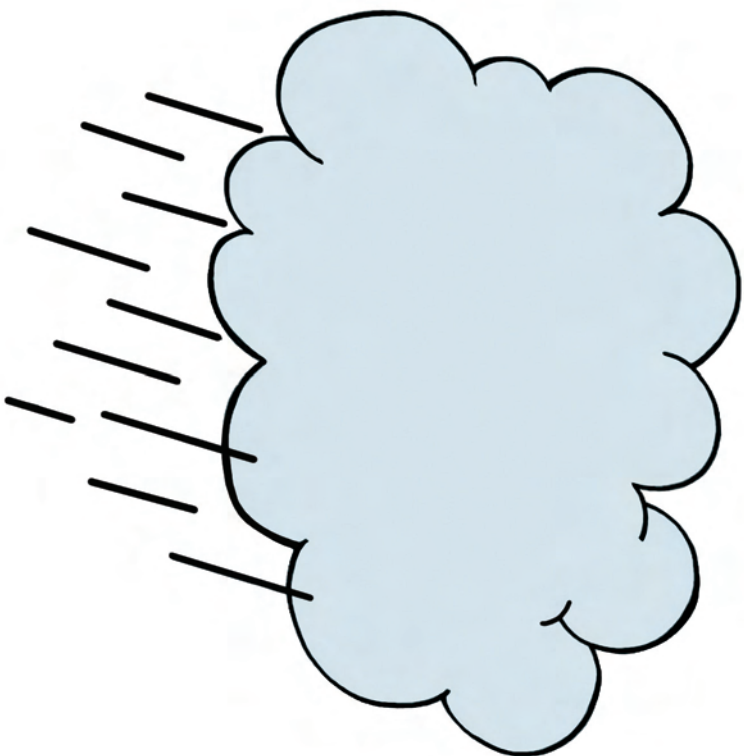


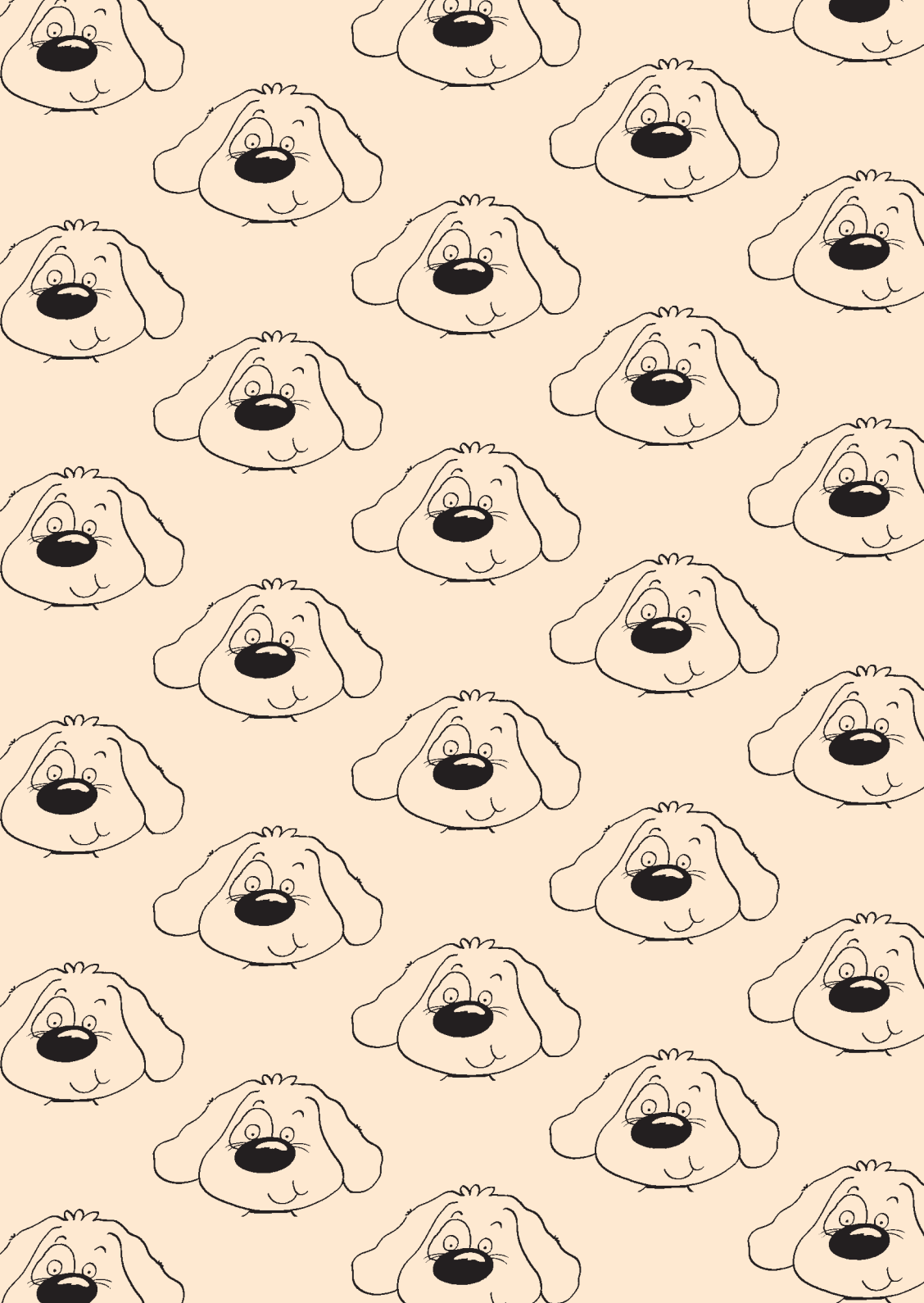


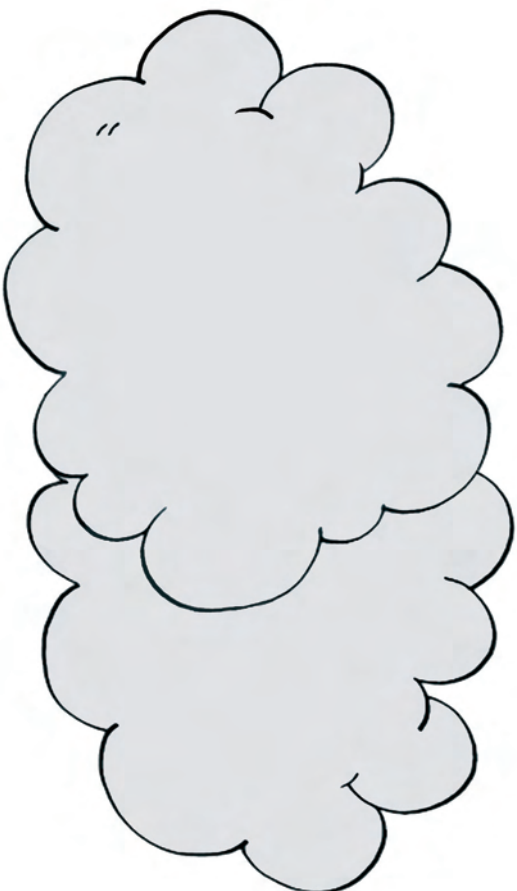




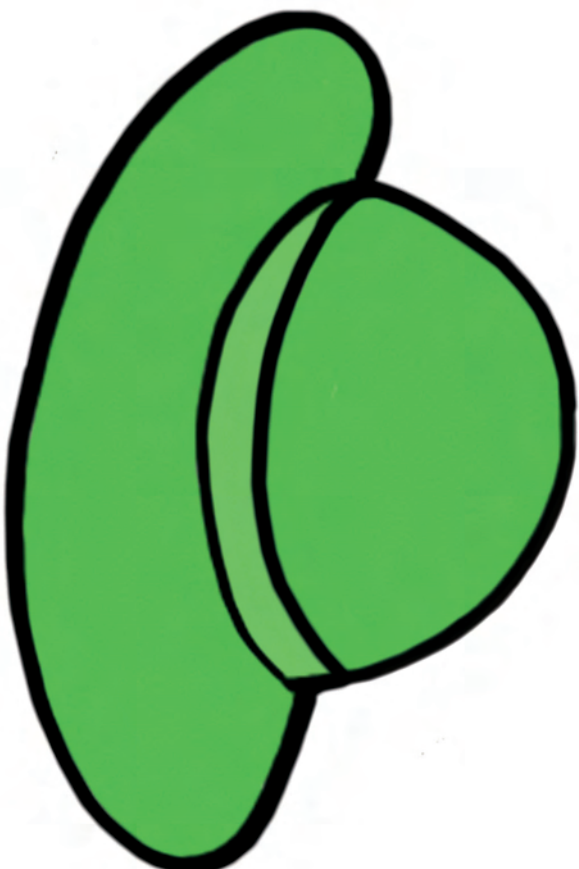








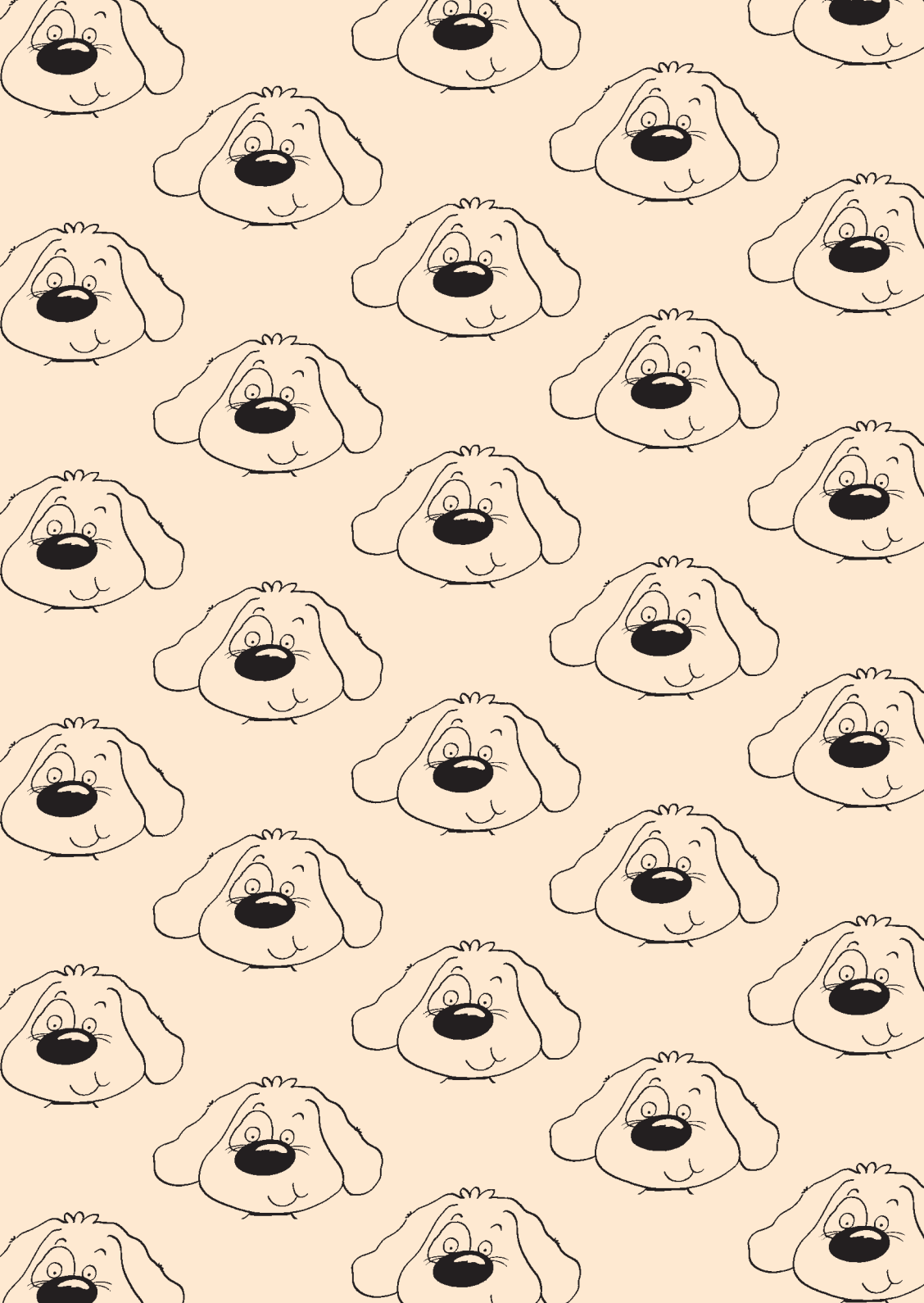


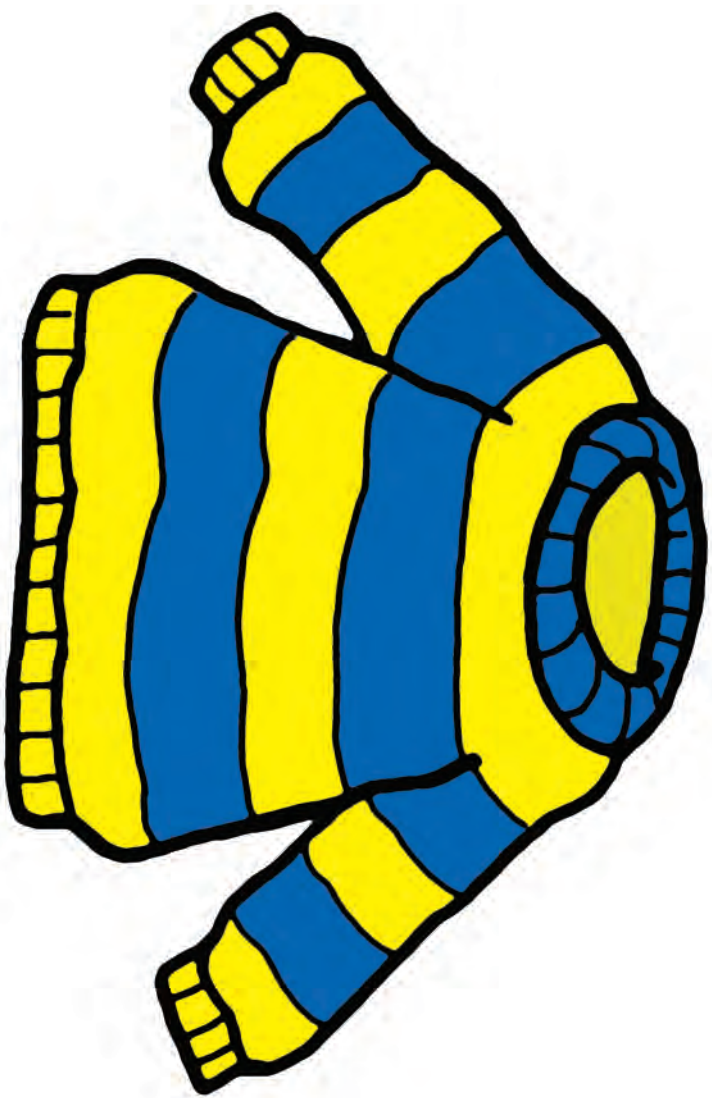








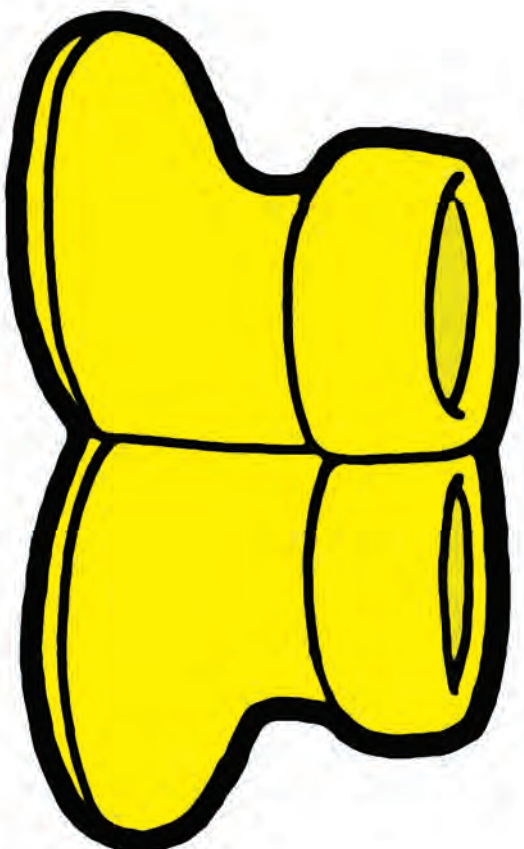


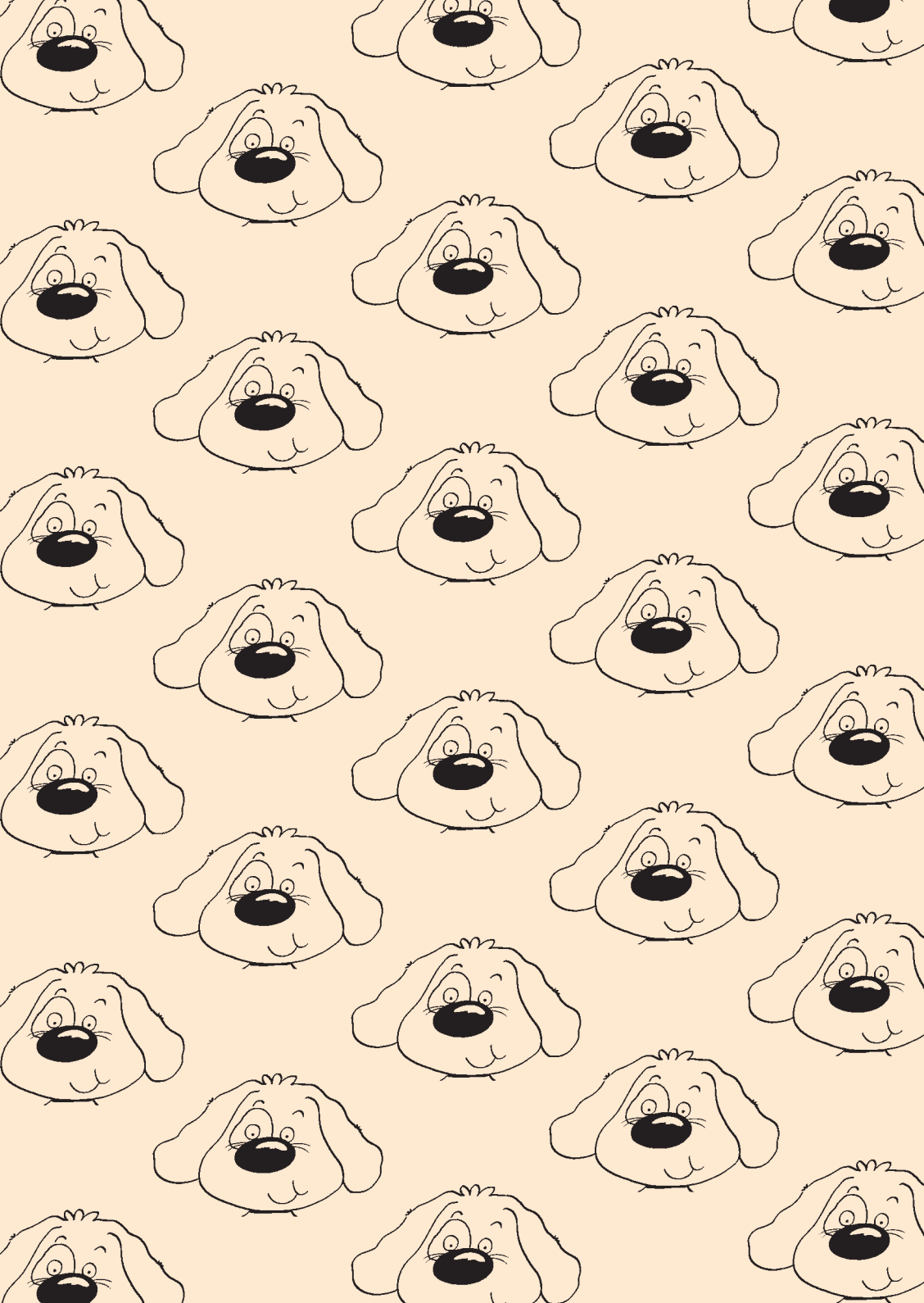




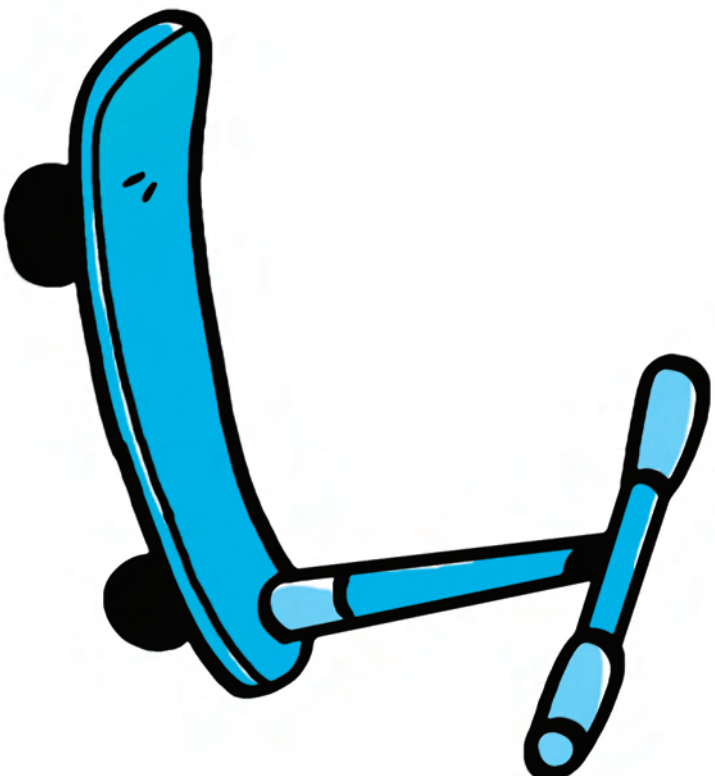




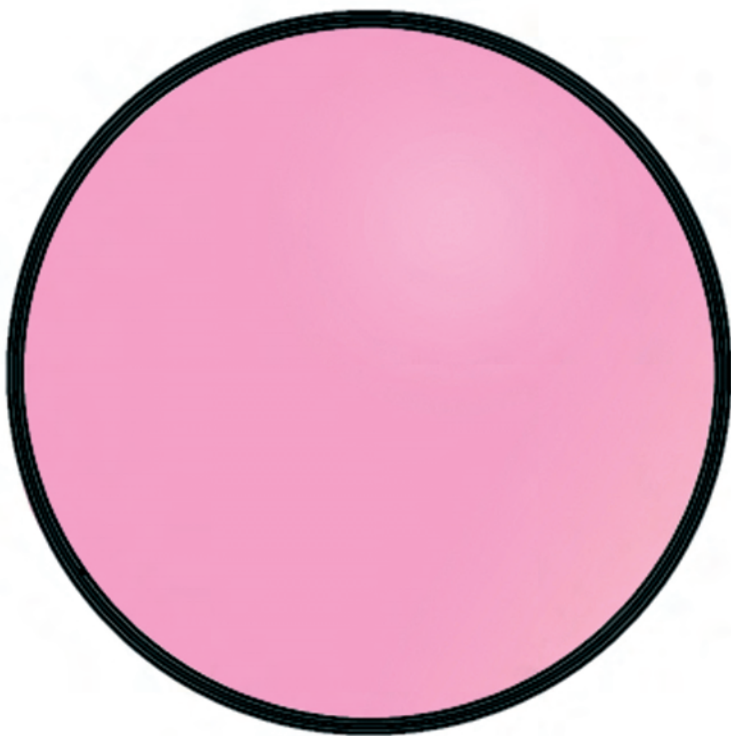




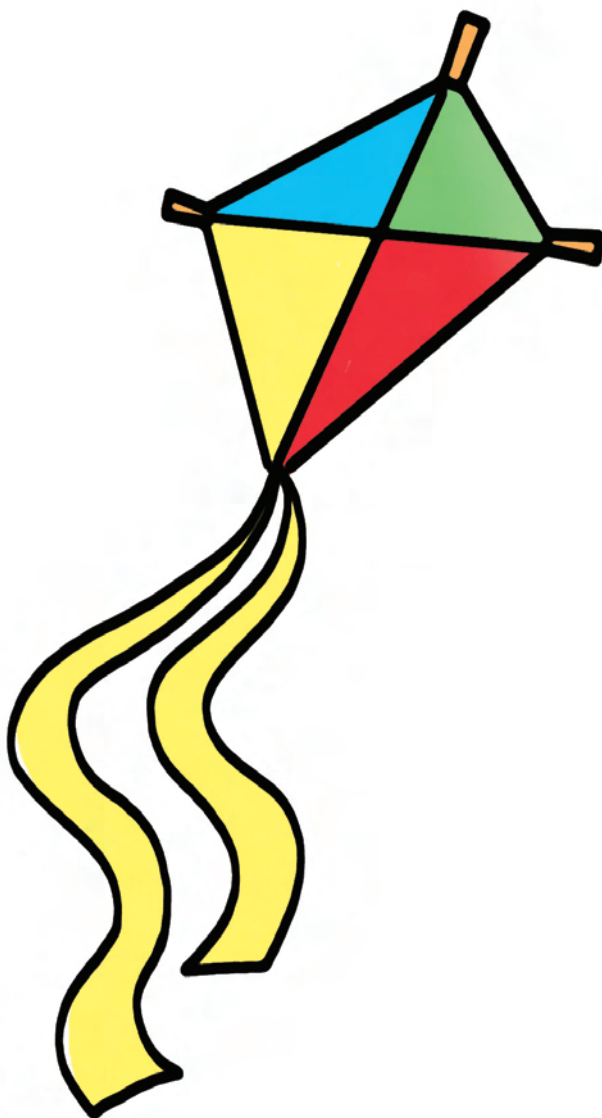




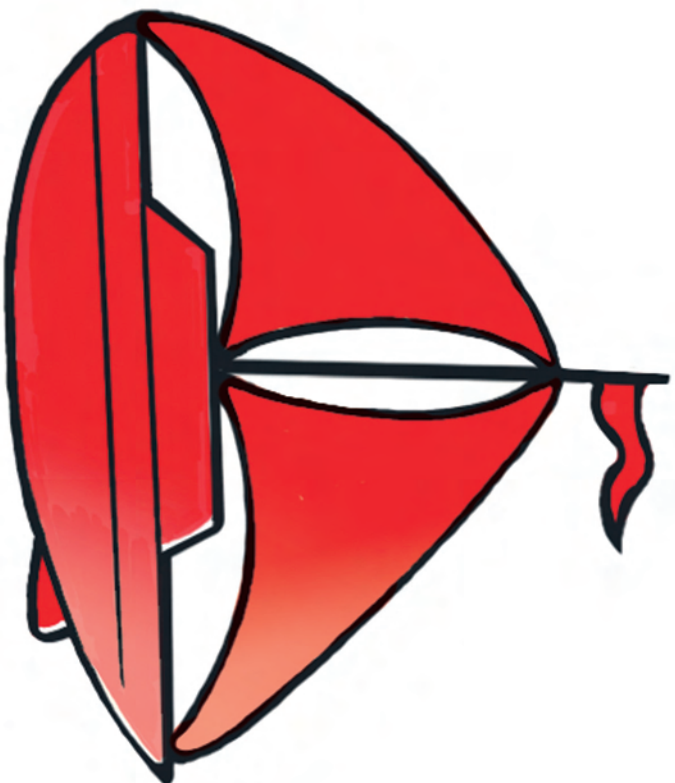








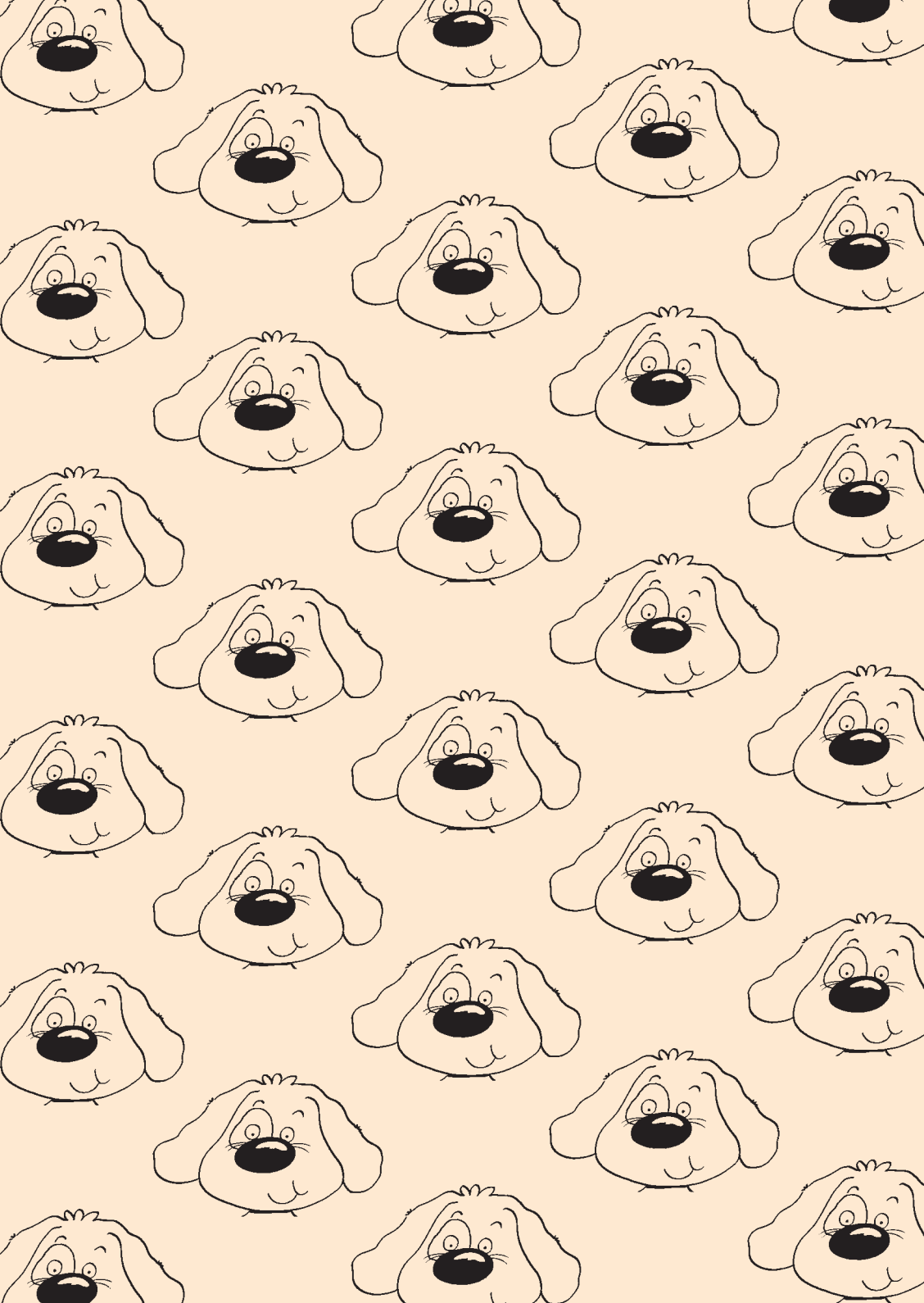


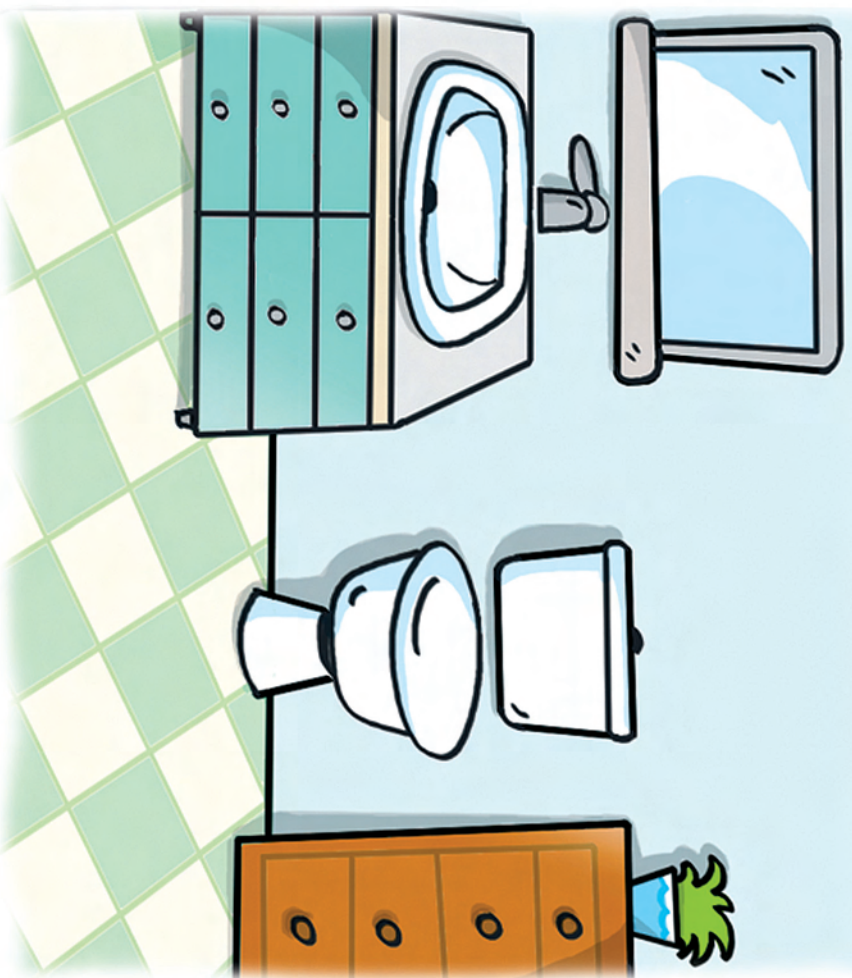




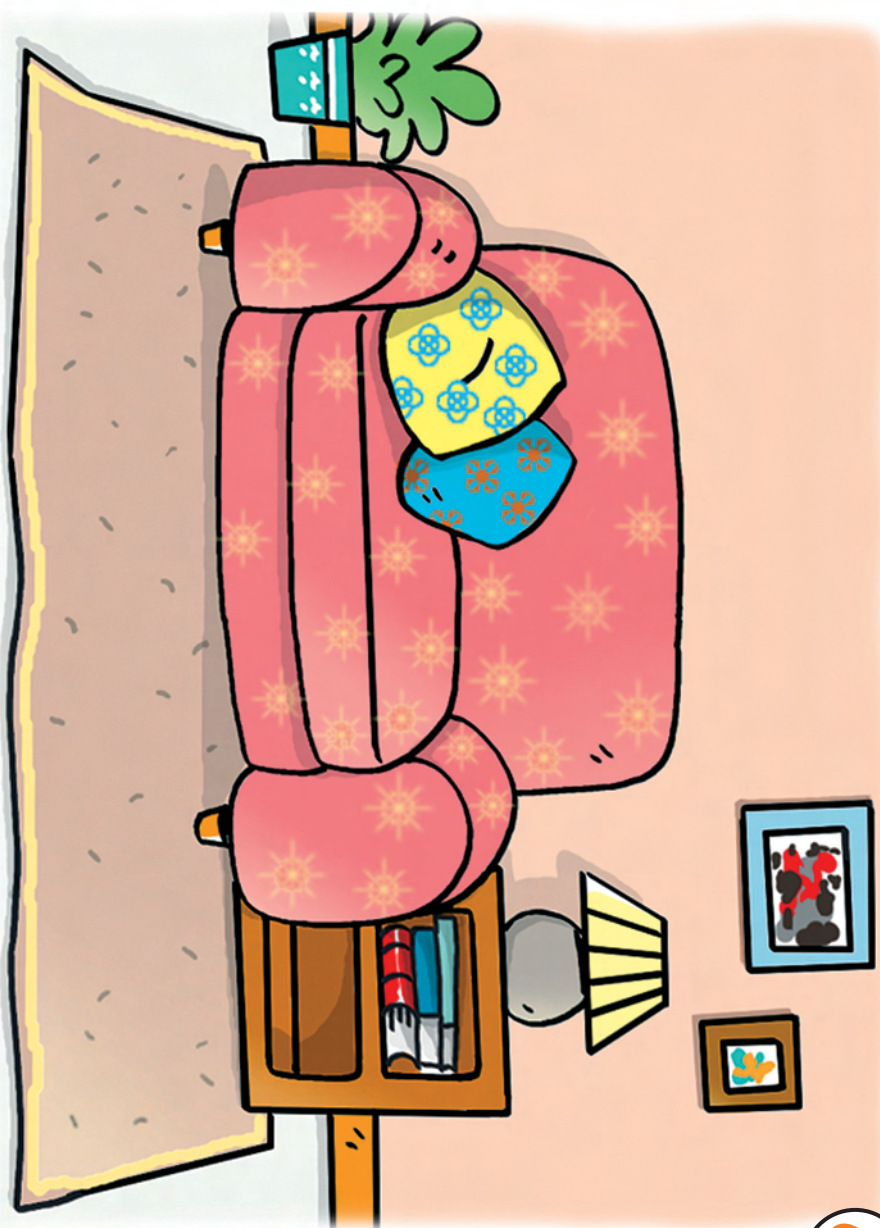






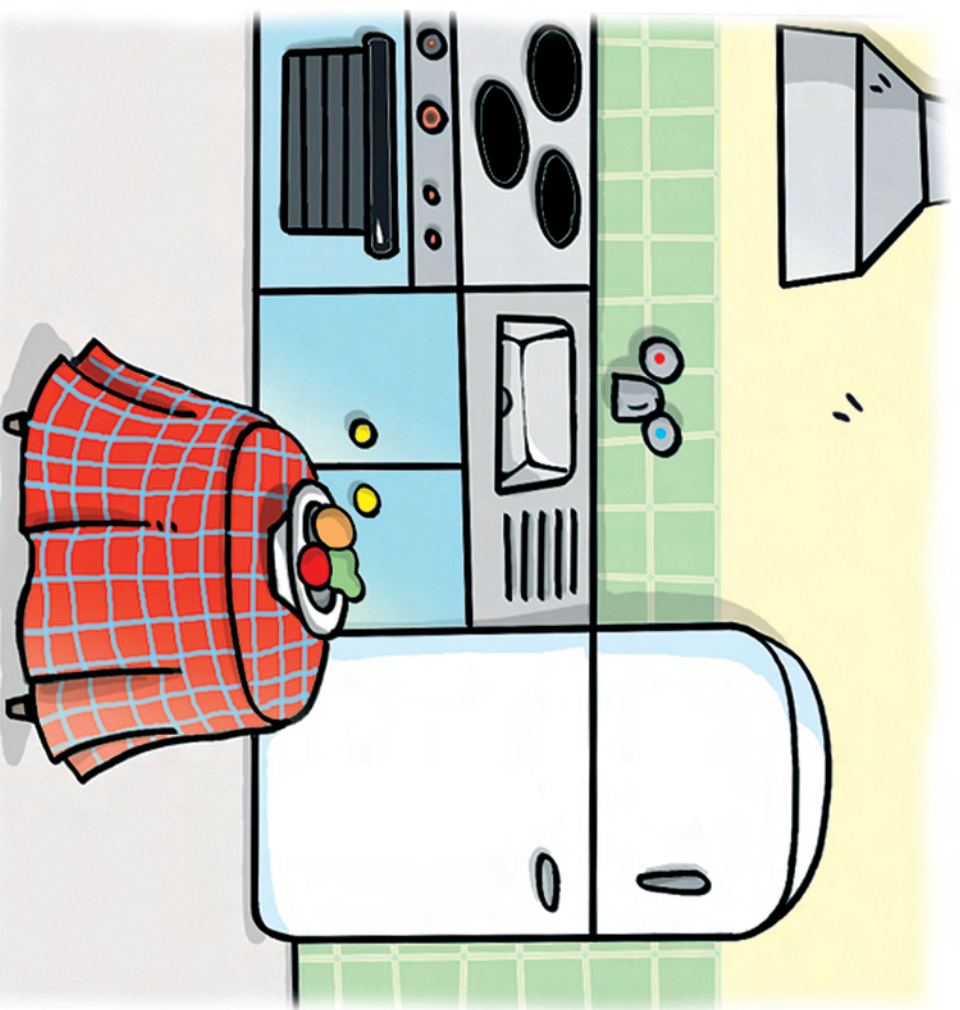






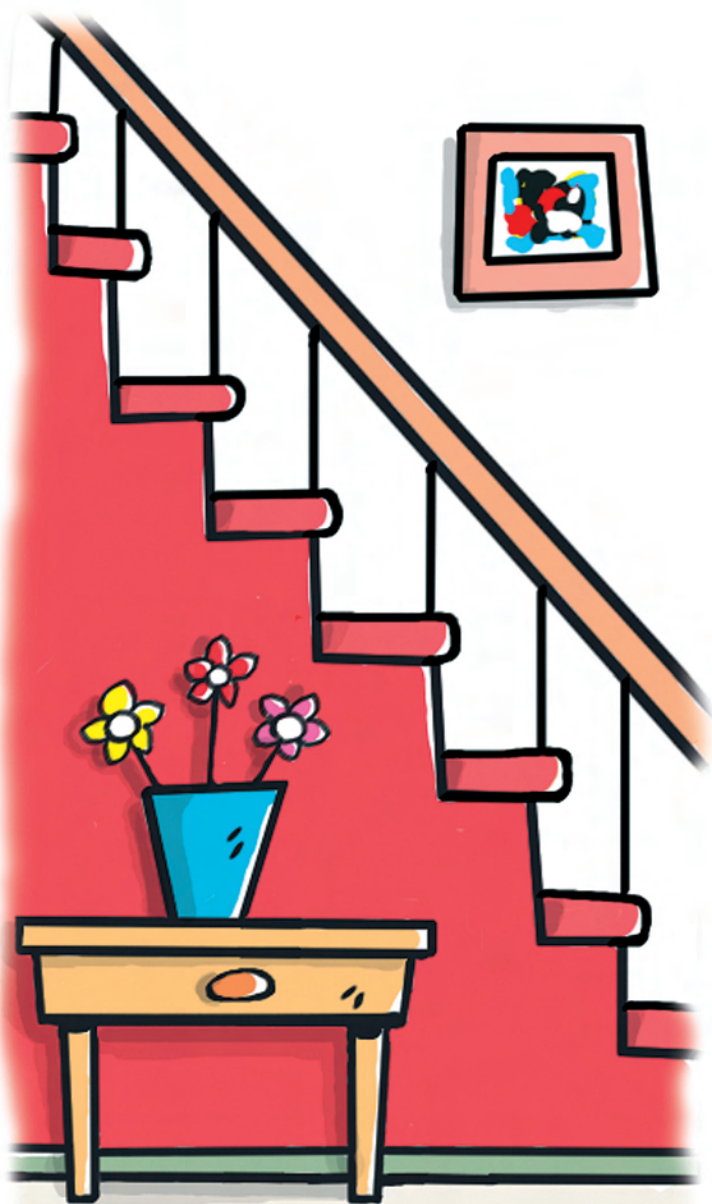


















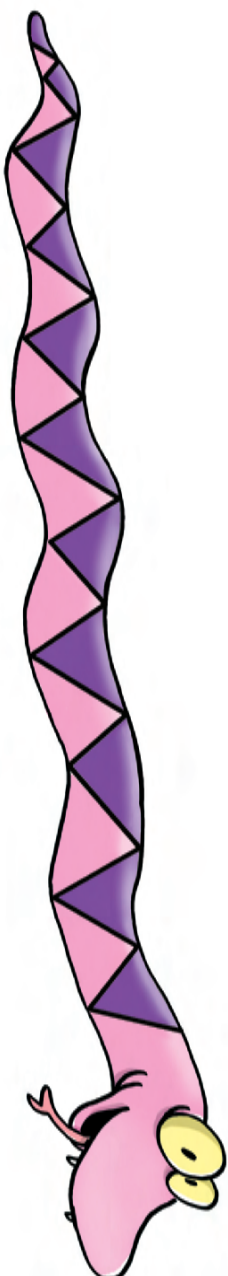




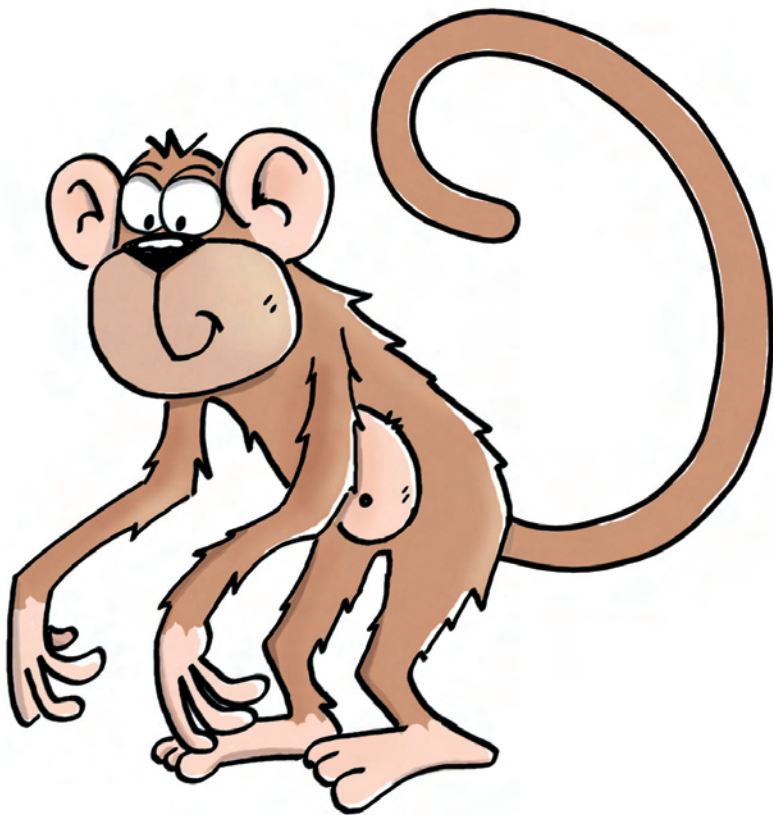


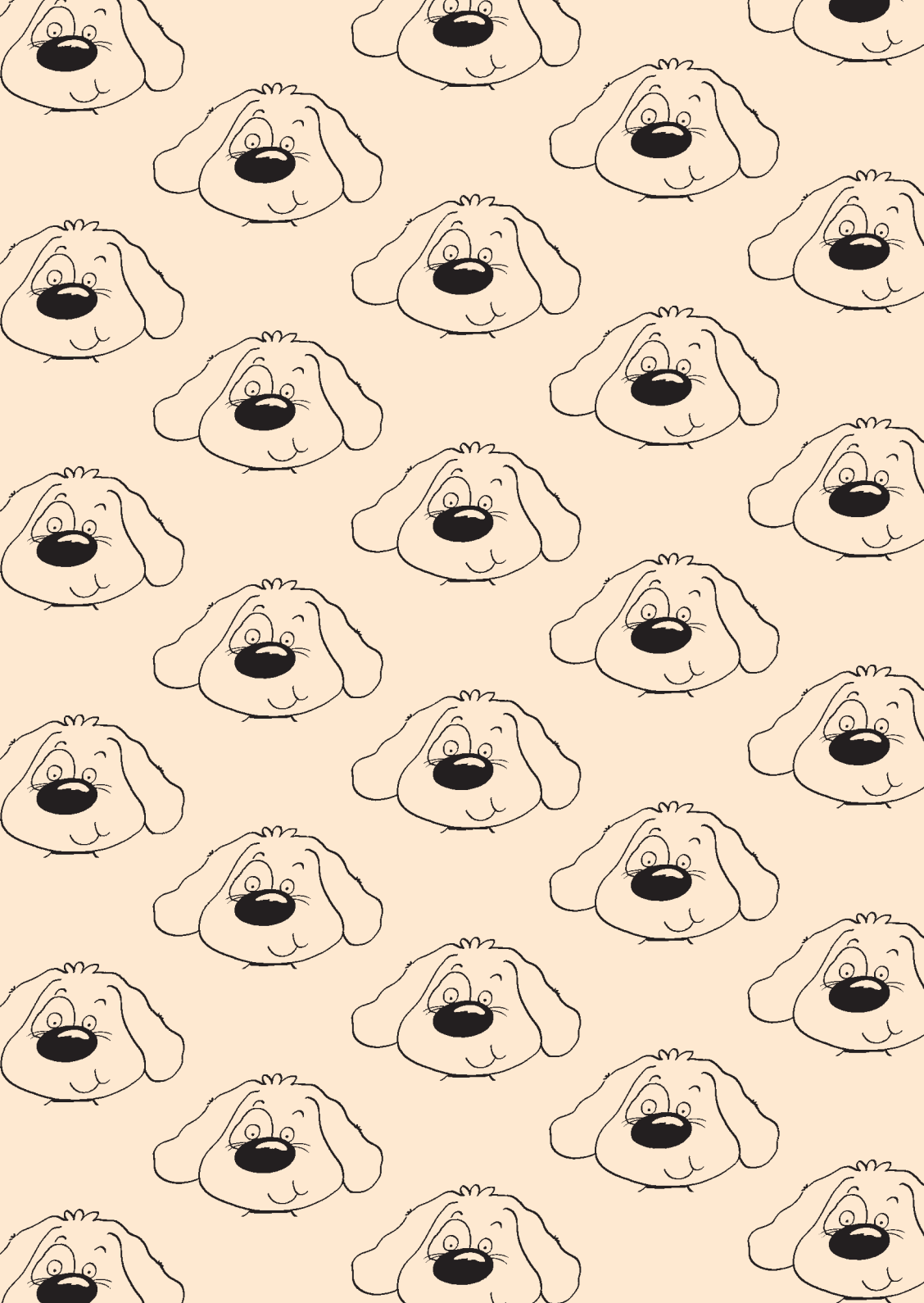


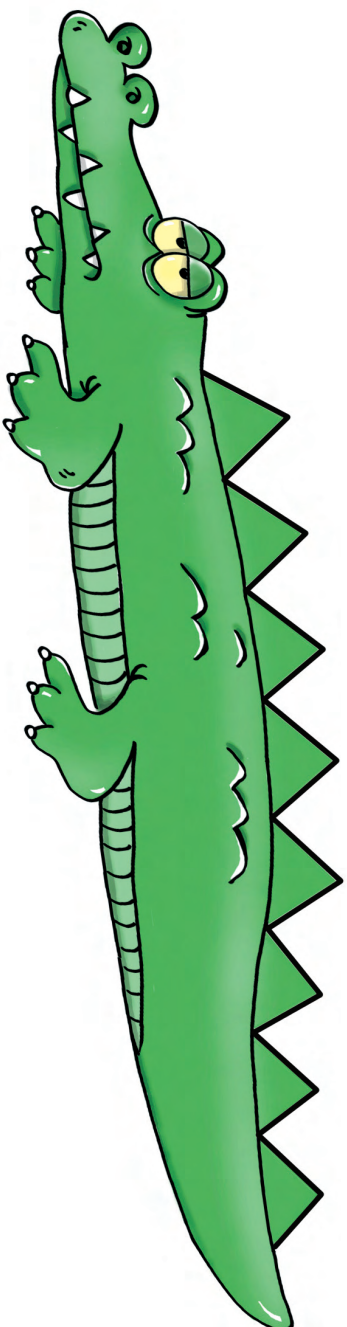




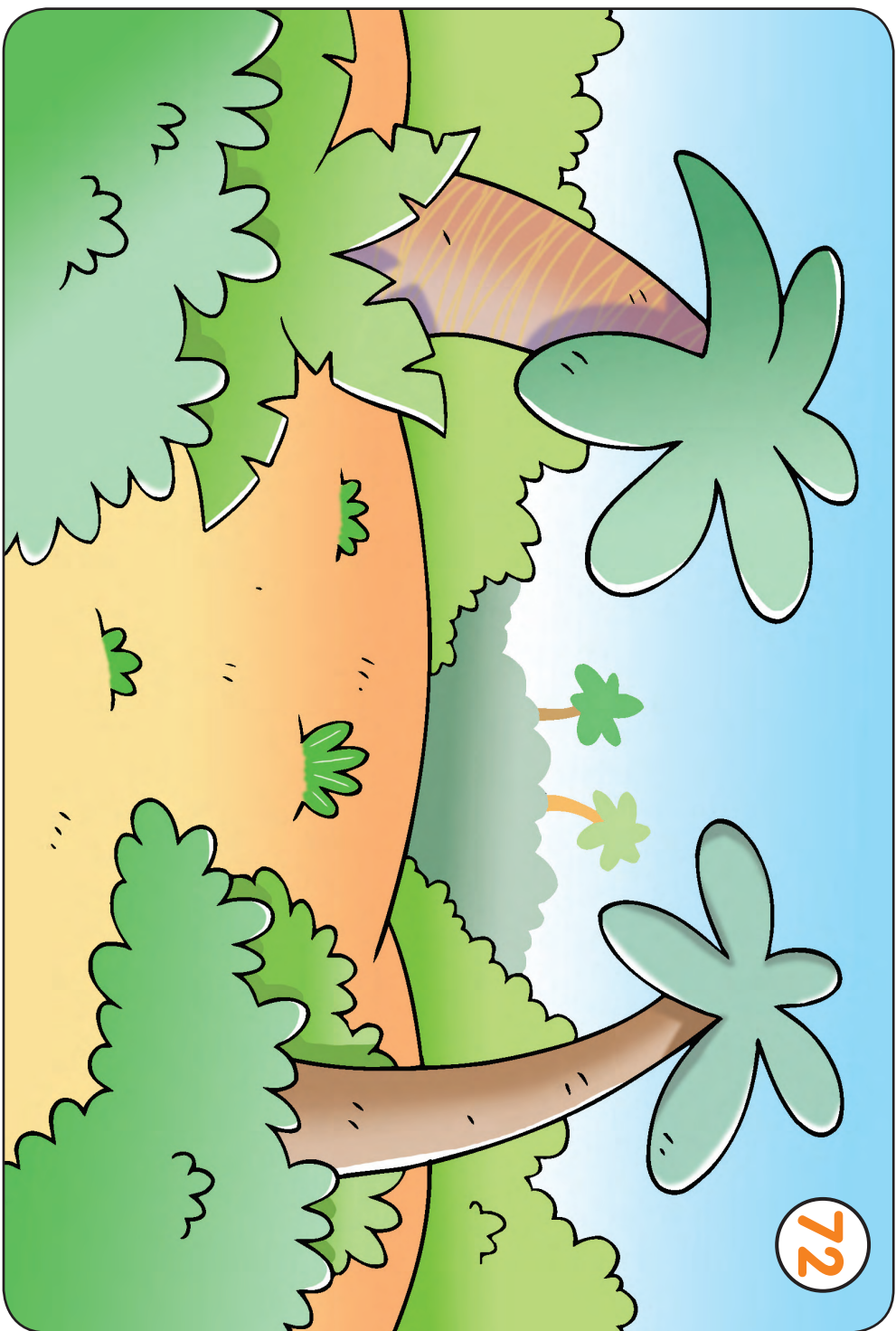






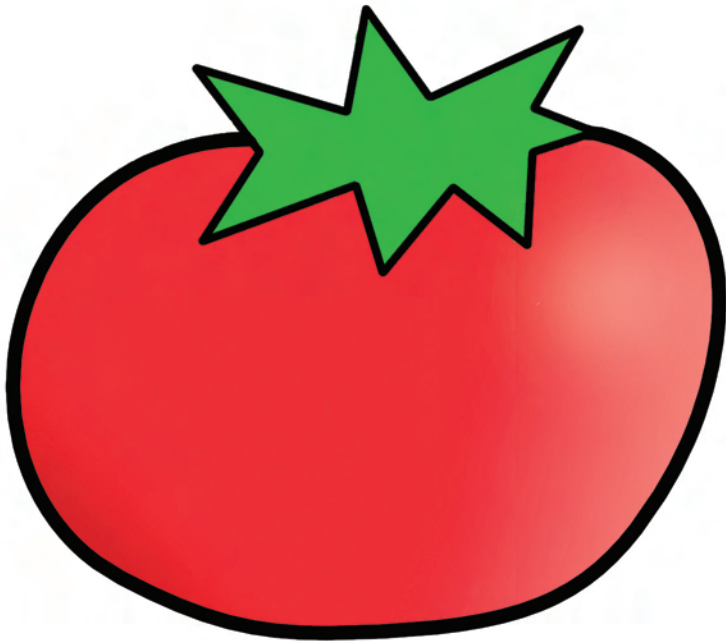




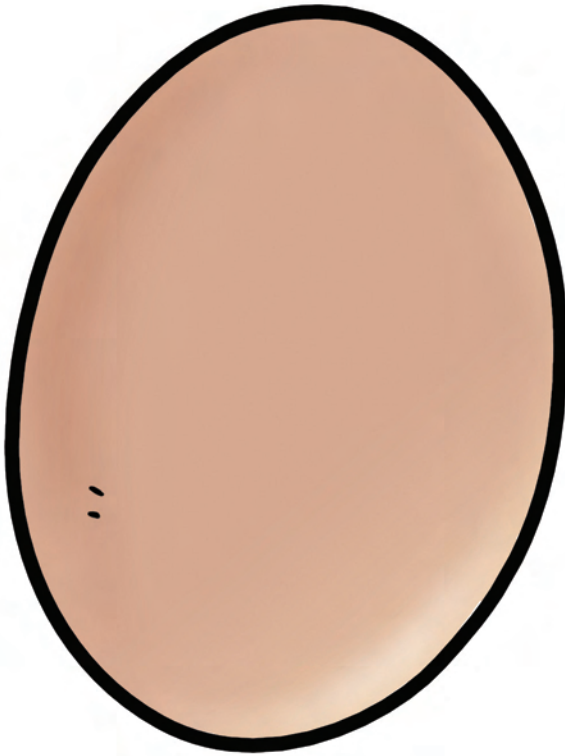




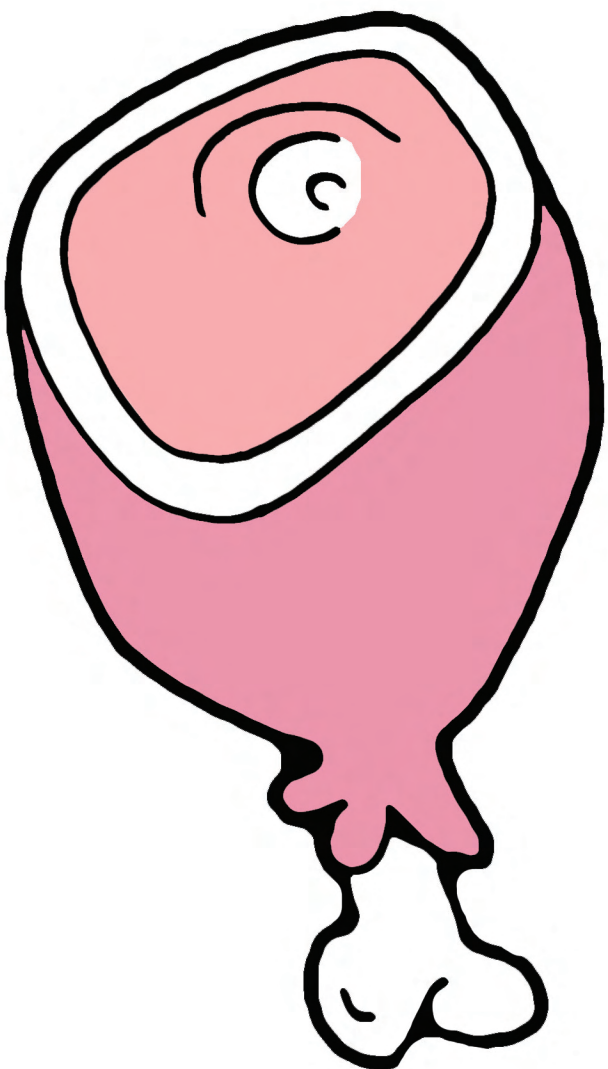




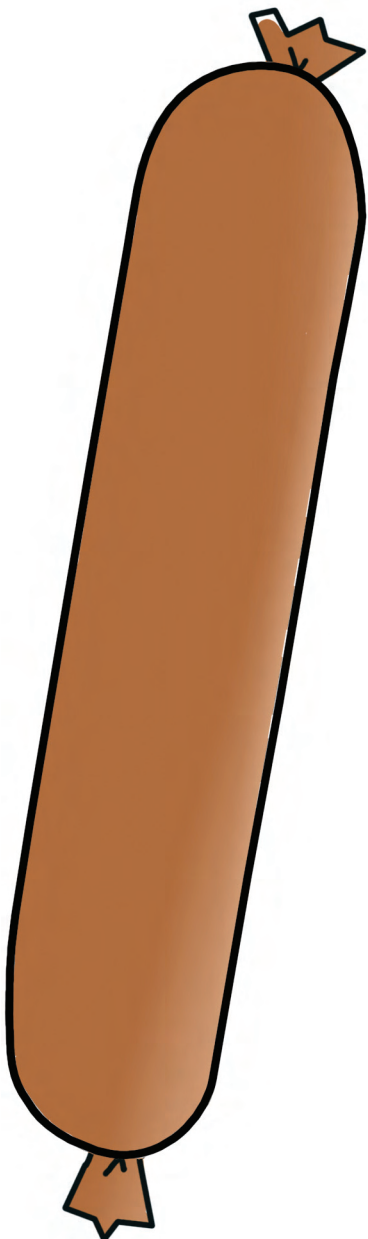






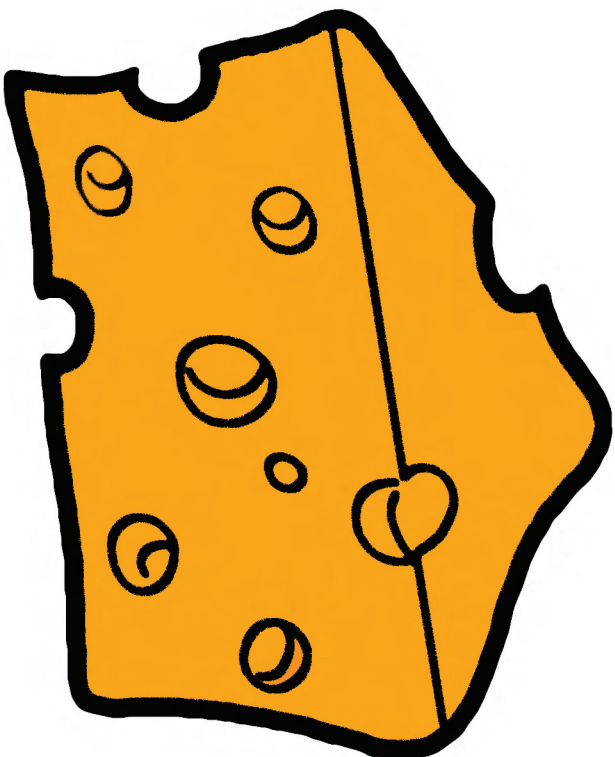




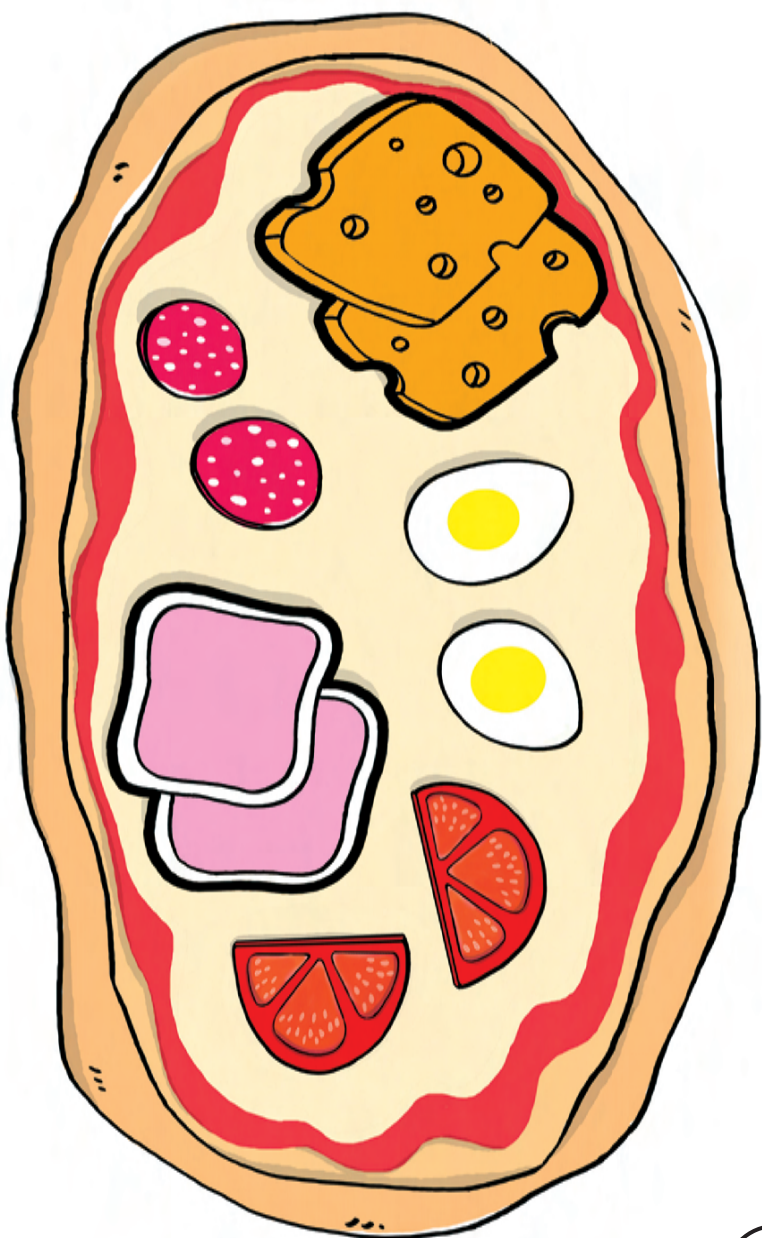


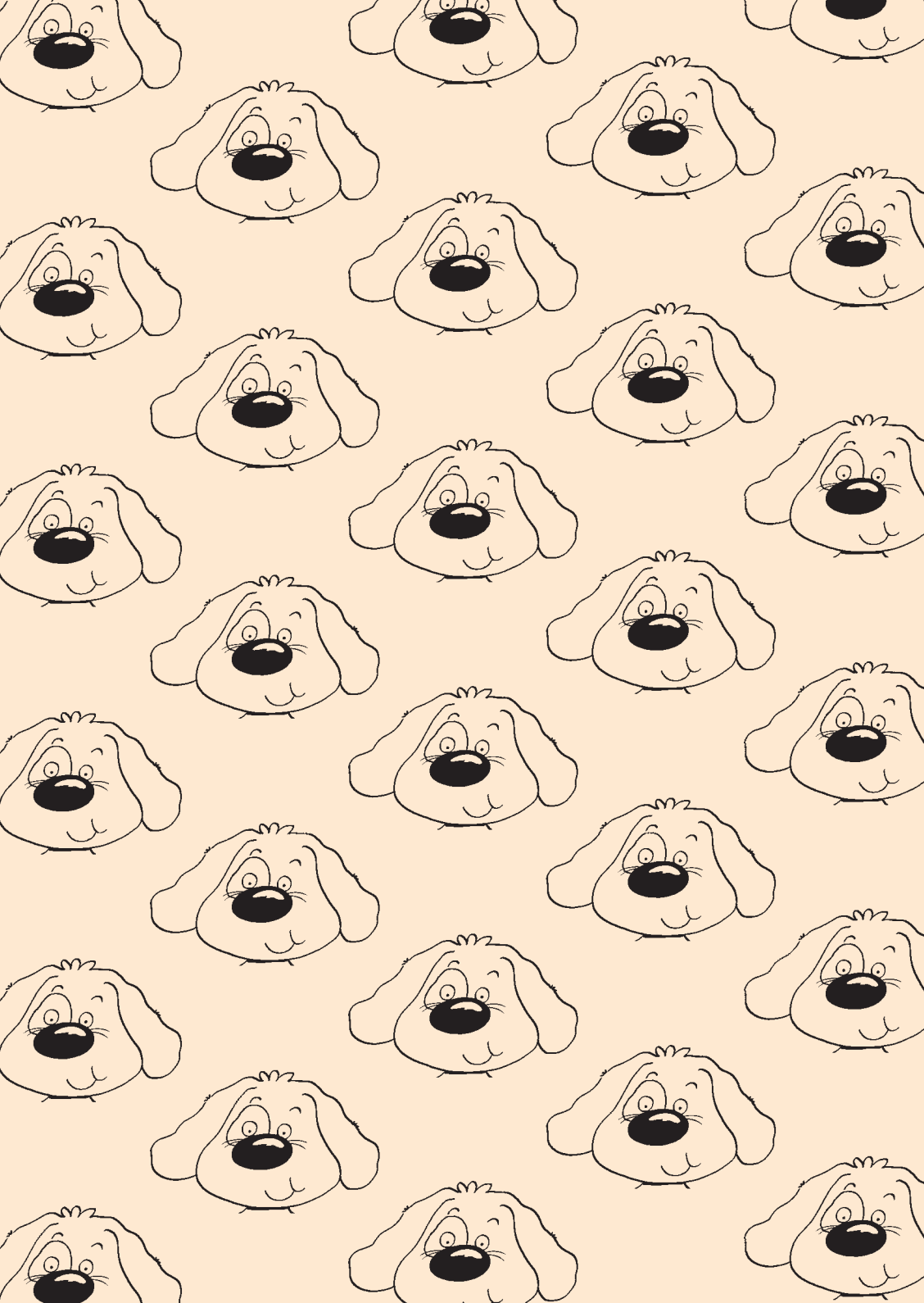






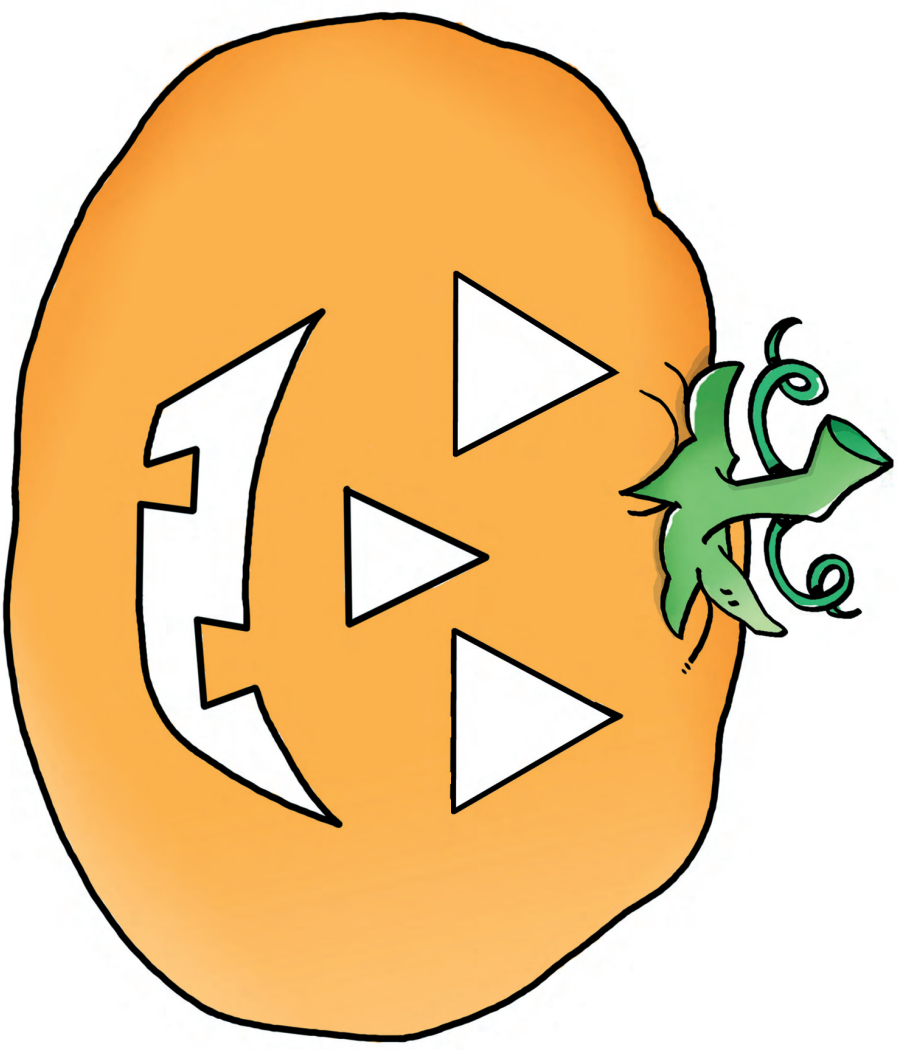


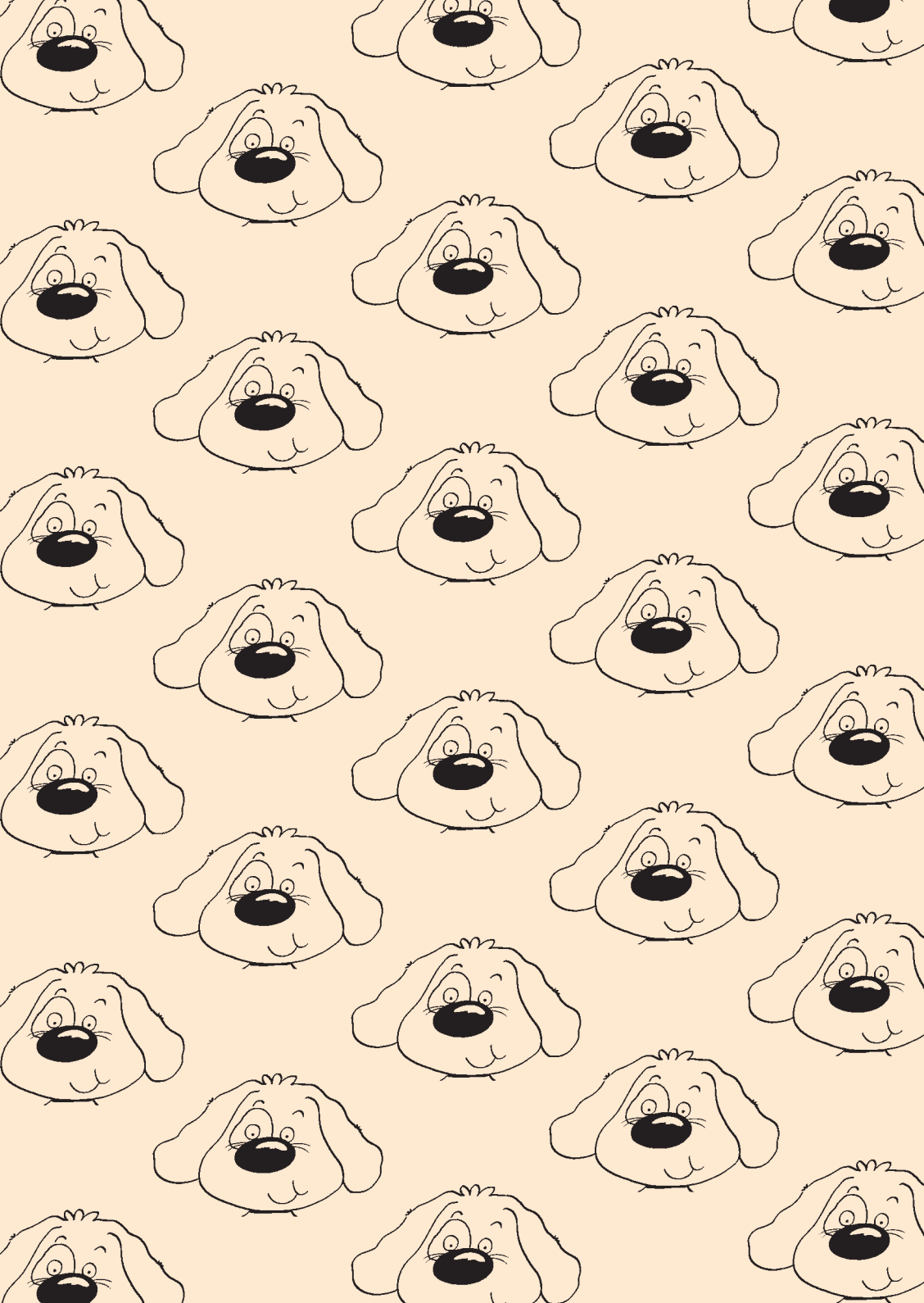
















Macmillan Heinemann English Language Teaching  
Between Towns Road, Oxford OX4 3PP  
A division of Macmillan Publishers Limited  
Companies and representatives throughout the world

ISBN 1 4050 8155 4

Design and illustration © Macmillan Publishers Limited 2005

Heinemann is a trademark of Harcourt Education Limited used under licence

First published 2005

All rights reserved; no part of this publication may be reproduced, stored in a retrieval system, transmitted in any form, or by any means, electronic, mechanical, photocopying, recording, or otherwise, without the prior written permission of the publishers.

Illustrated by Gloria Celma and Red Giraffe

Cover design by Cox Design Associates

Cover illustration by Gloria Celma

Printed in the UK by The Baskerville Press

2009	2008	2007	2006	2005
10	9	8	7	6
				5
				4
				3
				2
				1

ISBN 1-4050-8155-4



9 781405 081559 >